

# Ordering Guide

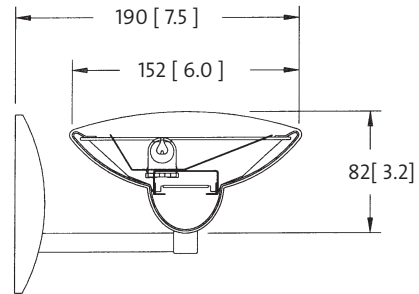
# Sculptura c5w Series 10

Wall Bracket

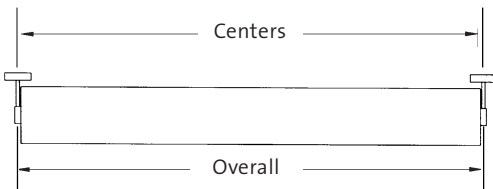
## Mounting Information

Nominal Length	Overall mm [in]	Centers mm [in]
4'	1235 [48.6]	1219 [48.0]
8'	2454 [96.6]	2438 [96.0]

Mounting plates supplied with fixture.



**Model Shown:**  
Solid body 100% uplight



Photometrics on reverse

Series	Model	Length	Body Style	Light Control	Mounting	Finish	Source	Voltage
C5W					7			
<b>A</b>  1 - T5 indirect		<b>4</b> 4' long	<b>N</b> solid body - 100% uplight		Mounting <b>7</b> wall mounted		Source <b>5</b> T5 <b>6</b> T5 HO	
			<b>P</b> perforated body <b>R</b> perforated body and opal inlay					
<b>D</b>  1 - T5 direct		<b>8</b> 8' long	<b>D</b> continuous diamond pattern with opal inlay	Light Control Up (Model A Indirect only) <b>U</b> open top <b>C</b> clear dust cover	Finish <b>W</b> white <b>S</b> special finish: indicate paint # and manufacturer  _____ _____ will be matched by Metalumen		Voltage <b>A</b> 120 Volt <b>B</b> 277 Volt <b>C</b> 347 Volt	
			<b>R</b> continuous rows					
			Light Control Down (Model D Direct only) <b>J</b> solid cross blade baffle <b>O</b> solid cross blade baffle and opal overlay <b>L</b> perforated cross blade baffle <b>M</b> perforated cross blade baffle and opal overlay					

## METALUMEN

Distinguished Design ↔ Engineered Excellence

METALUMEN MANUFACTURING INC.

570 Southgate Drive, Guelph, Ontario N1G 4P6

Mailing Address: P.O. Box 1779, Guelph, Ontario N1H 6Z9

toll free 1-800-621-6785 t 519-822-4381 f 519-822-4589

[www.metalumen.com](http://www.metalumen.com)

## Approvals

R1-06-02

Signature \_\_\_\_\_

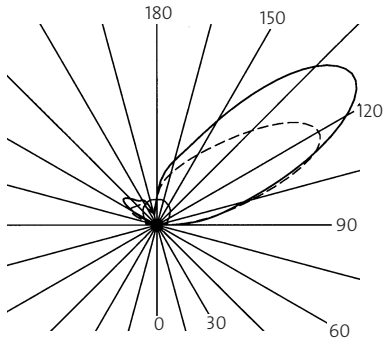
Date \_\_\_\_\_

# Photometrics

# Sculptura c5w Series 10

Wall Bracket

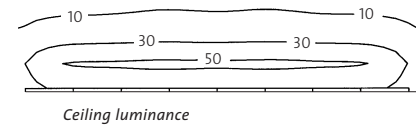
## Distribution Curve



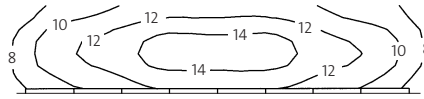
## Candlepower Summary

Angle	0.0	45	90	135	180	Output Lumens
90	40	42	6	2	0	10.16
95	209	187	45	2	1	74.96
105	470	513	57	14	1	238.41
115	928	917	65	130	54	399.47
125	1270	925	81	157	203	425.09
135	1169	694	99	142	196	312.72
145	800	492	116	130	154	191.03
155	489	366	125	86	137	102.67
165	346	275	134	65	64	47.90
175	226	193	133	97	84	12.93
180	132	132	132	132	132	0.79

## Corridor Layout



Ceiling luminance



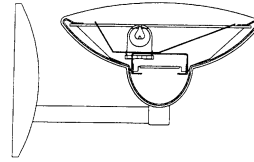
Horizontal footcandles at floor level

10.7(L) x 2.4(W) x 3.0(H)m [35 x 8 x 10 ft]  
 Reflectances: 80/50/20  
 Maintenance factor: 0.70  
 Mounting height: 2.3m [7'- 6"]

## Zonal Lumen Summary

Zone	Lumens	% Lamp	% Luminaire
0-30	0	0.0	0.0
0-40	0	0.0	0.0
0-60	0	0.0	0.0
0-90	5	0.2	0.3
90-120	718	24.8	39.5
90-130	1143	39.4	62.9
90-150	1647	56.8	90.7
90-180	1811	62.5	99.7
0-180	1816	62.6	100.0

## T5 1 Lamp



Photometric report – file # C5WANU-5-PT  
 Efficiency 62.6%  
 100% indirect  
 Model Shown 1-FP28 T5 Lamp  
 Solid body

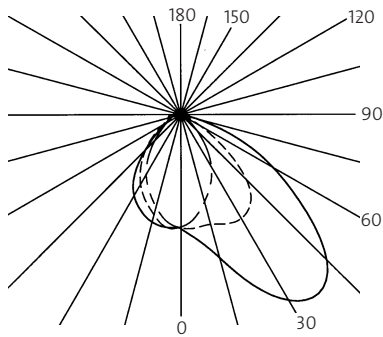
## Coefficients of Utilization Zonal Cavity Method

Effective Floor Cavity Reflectance = .20

RC	80				70				50			
RW	70	50	30	10	70	50	30	10	50	30	10	
RCR	0	60	60	60	60	51	51	51	51	35	35	35
	1	54	52	49	47	46	44	42	41	30	29	28
	2	49	45	41	38	42	38	36	33	26	24	23
	3	45	39	35	32	38	34	30	28	23	21	19
	4	41	35	30	27	35	30	26	23	20	18	16
	5	37	31	26	22	32	26	22	19	18	15	14
	6	34	27	22	19	29	23	19	17	16	13	12
	7	31	24	20	16	27	21	17	14	14	12	10
	8	29	22	17	14	24	19	15	12	13	10	9
	9	27	20	15	12	23	17	13	11	12	9	7
	10	25	18	14	11	21	15	12	9	10	8	7

Laboratory results may not be representative of field performance.  
 Ballast factors have not been applied.

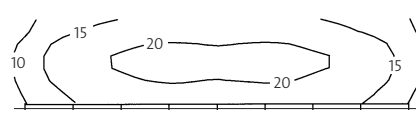
## Distribution Curve



## Candlepower Summary

Angle	0.0	45	90	135	180	Output Lumens
0	591	591	591	591	591	10.16
5	630	601	572	598	594	52.64
15	764	596	487	531	576	162.39
25	1012	629	392	451	516	258.73
35	1177	620	279	348	409	317.96
45	1088	504	152	229	217	291.82
55	739	246	70	110	81	183.53
65	413	78	38	49	60	99.71
75	103	23	19	24	54	37.03
85	23	9	7	11	31	9.27
90	5	3	1	5	6	1.90

## Corridor Layout



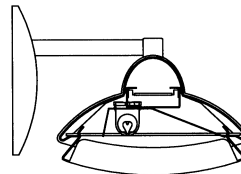
Horizontal footcandles at floor level

10.7(L) x 2.4(W) x 3.0(H)m [35 x 8 x 10 ft]  
 Reflectances: 80/50/20  
 Maintenance factor: 0.70  
 Mounting height: 2.3m [7'- 6"]

## Zonal Lumen Summary

Zone	Lumens	% Lamp	% Luminaire
0-30	477	16.5	33.6
0-40	795	27.4	56.0
0-60	1271	43.8	89.5
0-90	1418	48.9	99.9
90-120	2	0.1	0.1
90-130	2	0.1	0.1
90-150	2	0.1	0.1
90-180	2	0.1	0.1
0-180	1420	48.9	100.0

## T5 1 Lamp



Photometric report – file # C5WDNJ-5-PT  
 Efficiency 48.9%  
 100% direct  
 Model Shown 1-FP28 T5 Lamp  
 Solid cross blade baffle

## Coefficients of Utilization Zonal Cavity Method

Effective Floor Cavity Reflectance = .20

RC	80				70				50			
RW	70	50	30	10	70	50	30	10	50	30	10	
RCR	0	58	58	58	58	56	56	56	56	54	54	54
	1	54	52	50	48	52	51	49	48	49	47	46
	2	49	46	43	41	48	45	42	40	43	41	39
	3	46	41	37	35	44	40	37	34	39	36	34
	4	42	37	33	30	41	36	32	30	35	32	29
	5	39	33	29	26	38	33	29	26	32	28	26
	6	36	30	26	23	35	29	26	23	29	25	23
	7	33	27	23	20	33	27	23	20	26	23	20
	8	31	25	21	18	30	25	21	18	24	21	18
	9	29	23	19	16	28	23	19	16	22	19	16
	10	27	21	17	15	27	21	17	15	20	17	15

Laboratory results may not be representative of field performance.  
 Ballast factors have not been applied.