

**\*PLEASE READ FIRST:**

- 1) THIS LINEAR LIGHTING SYSTEM SHOULD BE INSTALLED PRIOR TO THE INSTALLATION OF THE CEILING.
- 2) ALL REFERENCES TO LEFT AND RIGHT HAND SIDE INSTALLATION ARE BASED ON VIEWING THE SYSTEM FACING THE WALL WITH THE FIXTURES IN THE INSTALLED POSITION.
- 3) ALL FIXTURE RUNS ARE CONSTRUCTED LEFT TO RIGHT.
- 4) LETTERS REFER TO INSTALLATION STEPS BELOW.  
NUMBERS REFER TO PARTS LISTING.

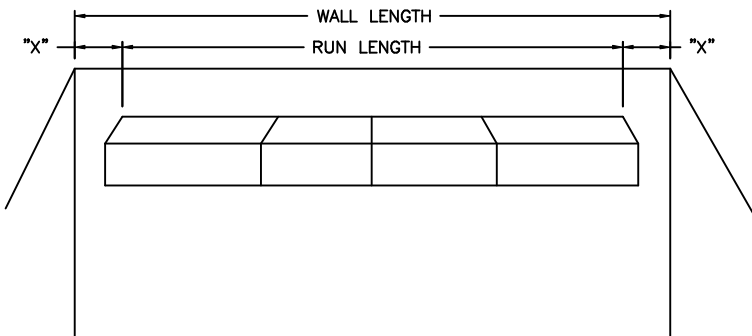
**\*INSTALLATION PROCEDURE**

**A STEP A – MOUNT WALL SIDE EXTRUSIONS.**

Using #8 screws install WALL EXTRUSION 1 with bottom face flush with finished ceiling line.  
Shim as required to maintain flat and straight installation.  
Maintain within  $\pm 3\text{mm}$  [ $\pm 1/8"$ ] at all times.

**B STEP B – INSTALL END UNITS.**

Measure wall and fixture run length and position starter fixture to center run on wall.  
Install Starter Fixture at Left and suspend.  
Mount End Extension/Cover over body of fixture.  
(See Fig. A and Fig. B)



**C STEP C – INSTALL REMAINING FIXTURES AS REQUIRED TO COMPLETE THE RUN.**

The length of the FIXTURE RUN determines the type of units used at the beginning and for subsequent fixtures.  
All fixture housings should be screwed together at each joint See (FIG. D).  
Caution should be taken to ensure that wires are not pinched during this operation.  
Applications involving emergency circuits require the use of fixtures with EMERGENCY designation.

PROGRESSIVELY CONNECT MAIN POWER SUPPLY

**D STEP D – MOUNT CORNER UNITS OVER FIXTURES AT CORNER AND SECURE WITH SCREWS TO EXTRUSIONS.**

**E STEP E – SECURE LAMP FIXTURE ASSEMBLIES TO WALL EXTRUSIONS**

**F STEP F – SECURE LAMP FIXTURE ASSEMBLIES TO CEILING EXTRUSIONS**  
Install spacer brackets (SHIPPED SEAPATELY) to maintain opening during the balance of the installation procedure.  
(see FIG. C)  
THE OPENING MUST BE HELD WITHIN 3mm [ $1/8"$ ]

**G STEP G – TRIM AND INSTALL CEILING TILE.**

**H STEP H – REMOVE SPACER BRACKETS.**

**K STEP K – INSTALL LAMPS, LOUVRES or BAFFLES.**

**CAUTION**

CAUTION SHOULD BE TAKEN WHEN CONNECTING THE POWER SUPPLY AND ENERGIZING THIS SYSTEM. THIS LINEAR RECESSED LIGHTING SYSTEM IS A CONTINUOUS MULTIPLE CIRCUIT LIGHTING ASSEMBLY THAT CAN BE ENERGIZED FROM SEVERAL POINTS. ALL ELECTRICAL CIRCUITS SHOULD BE CONNECTED ACCORDING TO THE ELECTRICAL PLANS.

MATERIAL	BY	TITLE INSTALLATION INSTRUCTION -CS1-	
FINISH	CHK'D	PERIMETER	
DATE	SCALE	METALUMEN	DWG NO. IS-CS1-01
05/07/12	NTS		
SHT 1	OF 4		

A

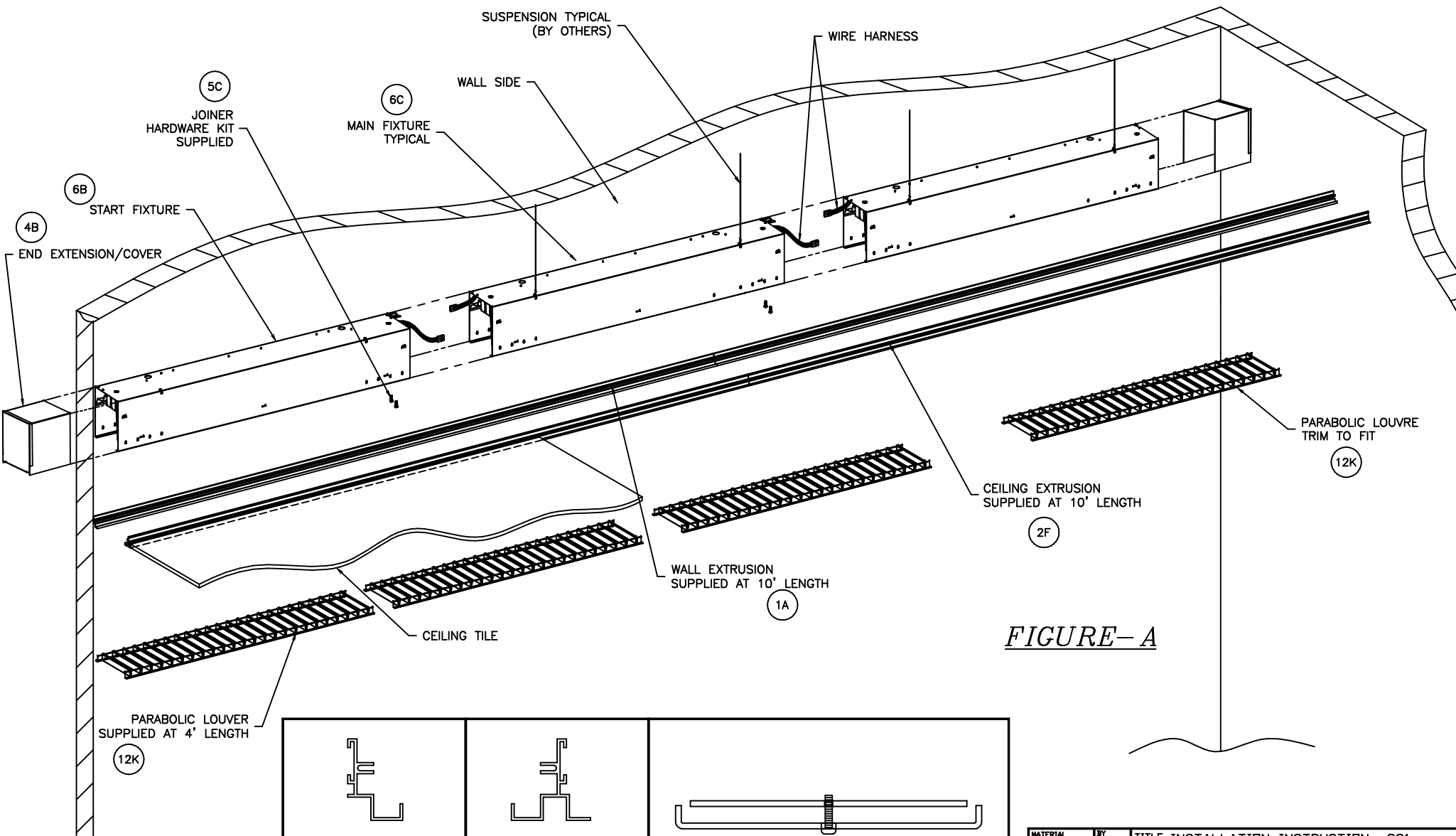
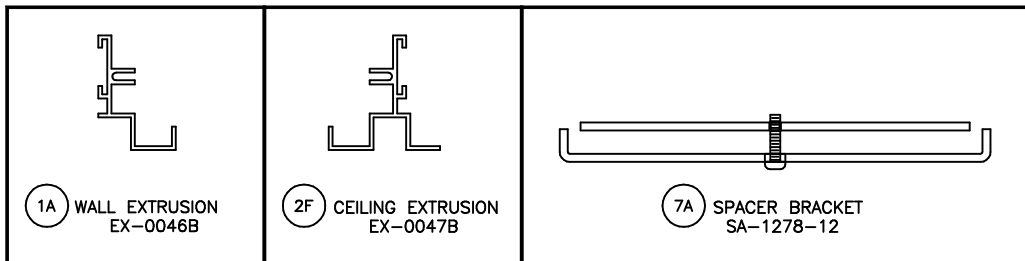
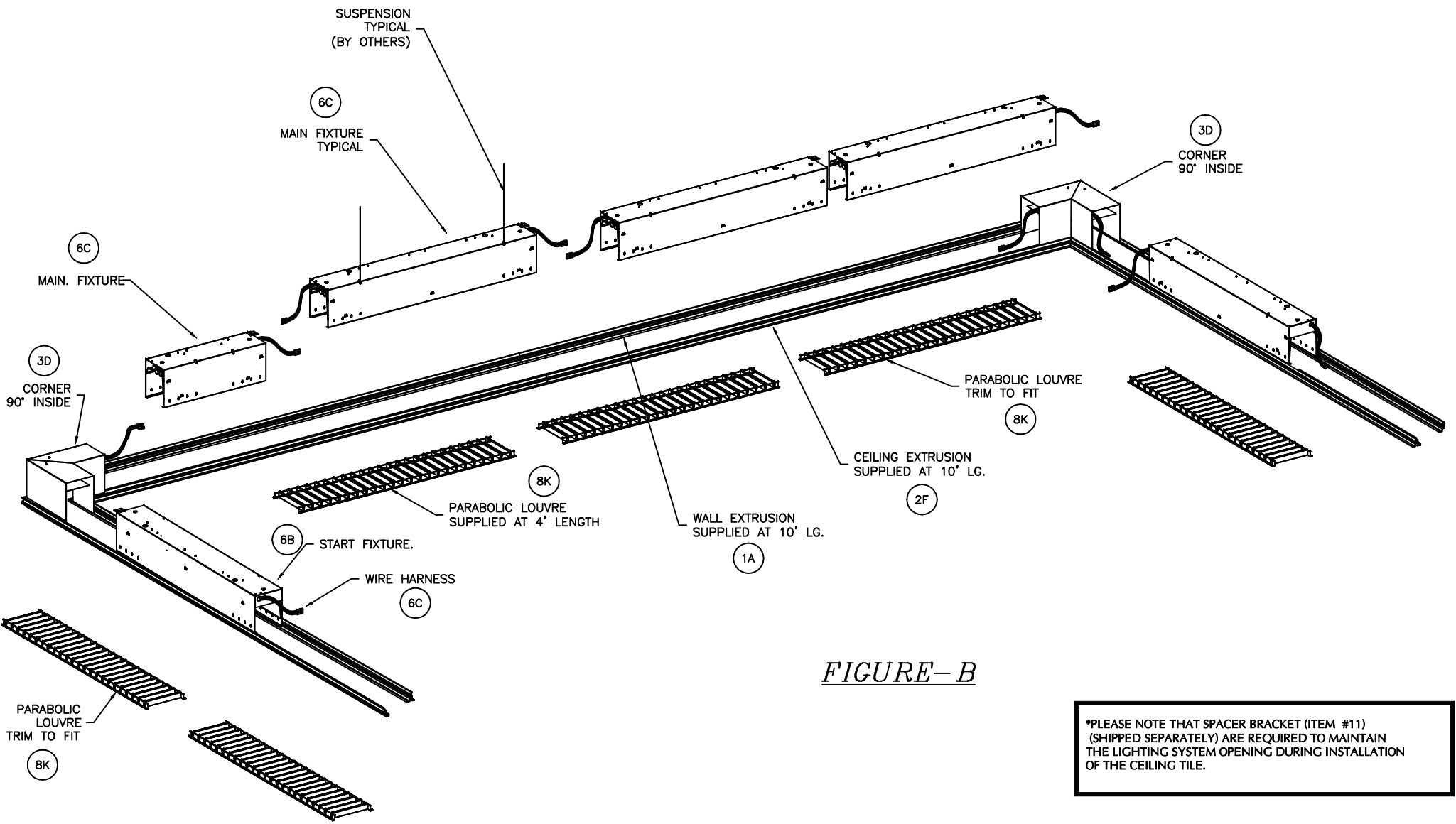


FIGURE-A



MATERIAL	BY	TITLE INSTALLATION INSTRUCTION -CS1-	
FINISH	CHK'D	PERIMETER	
DATE	SCALE	METALUMEN	DWG NO.
05/07/12	NTS		
SHT 2	OF 4	IS-CS1-01	

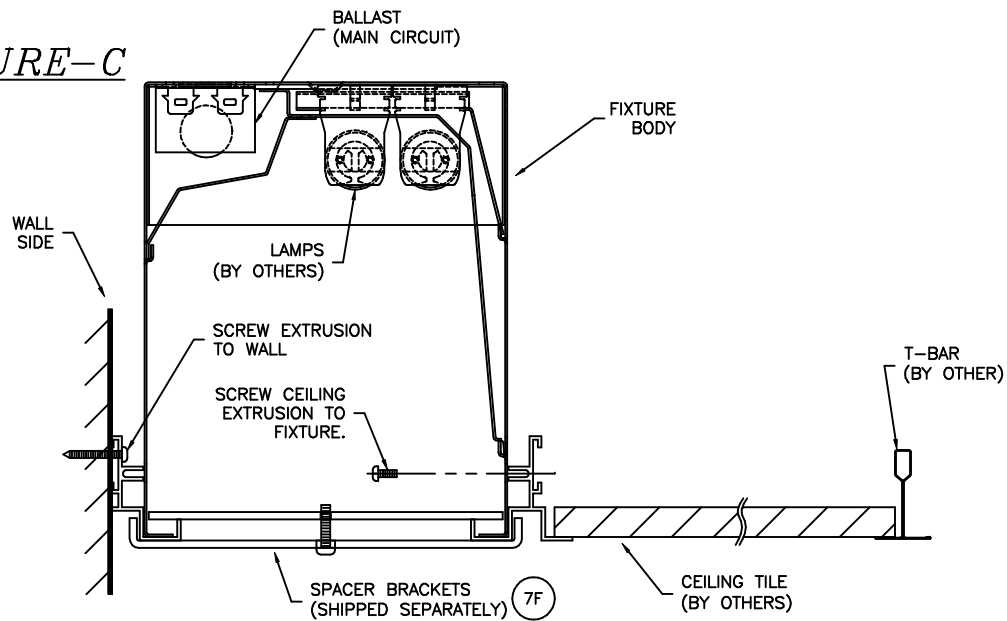


**FIGURE-B**

\*PLEASE NOTE THAT SPACER BRACKET (ITEM #11) (SHIPPED SEPARATELY) ARE REQUIRED TO MAINTAIN THE LIGHTING SYSTEM OPENING DURING INSTALLATION OF THE CEILING TILE.

MATERIAL	BY	TITLE INSTALLATION INSTRUCTION -CS1-	
FINISH	CHK'D	PERIMETER	
DATE	SCALE	METALUMEN	DWG NO. IS-CS1-01
05/07/12	NIS		
SHT 3	OF 4		

FIGURE-C



\*PARTS LIST/DESCRIPTION

- 1- WALL SIDE EXTRUSION  
EX-0046B WALL SIDE EXTRUSION
- 2- CEILING SIDE EXTRUSION  
EX-0047B CEILING SIDE EXTRUSION
- 3- CORNERS  
CS1-C90 INSIDE/OUTSIDE 90° CORNER  
CS1-C45 INSIDE/OUTSIDE 45° CORNER
- 4- END EXTENSION/COVER  
CS1-EC-01
- 5- HARWARE KIT  
CS1-HDWR -> # 8x5/16" LG. SHEET METAL SCREWS.
- 6- MAIN FIXTURE  
CS1-1XT8(T5)-2/3/4/8-START 1 LAMP FIXTURE  
2'/3'/4'/8' START/MID/END/ALONE FIXTURE.  
CS1-2XT8(T5)-2/3/4/8-START 2 LAMP FIXTURE  
2'/3'/4'/8' START/MID/END/ALONE FIXTURE.
- 7- SPACER BRACKETS  
SA-1278-12 SPACER BRACKETS (SHIP SEPARATELY)
- 8- PARABOLIC LOUVRE  
SA-4343-148 48" PARABOLIC LOUVRE (SHIP SEPARATELY)

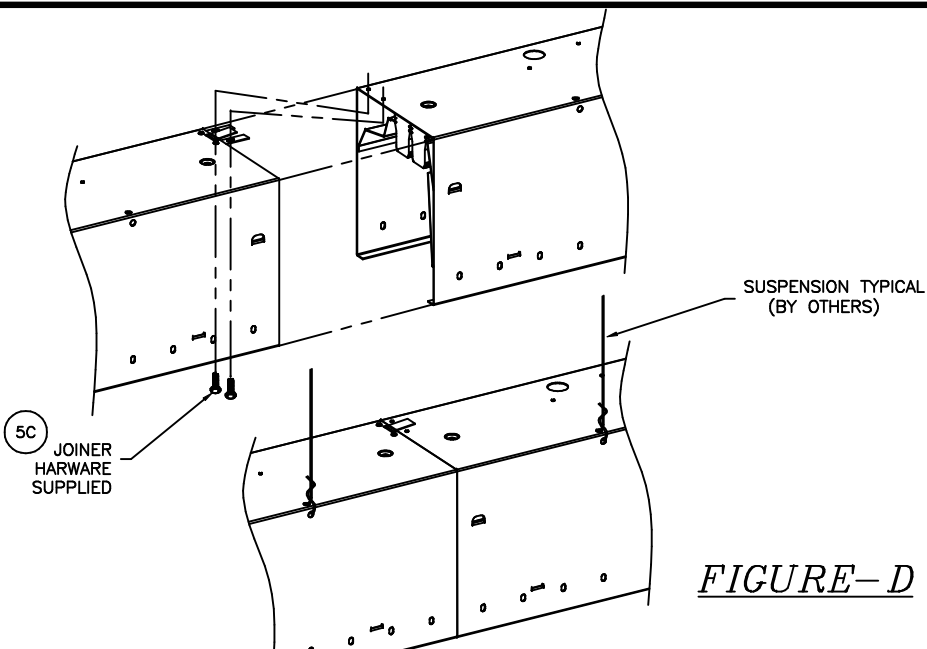
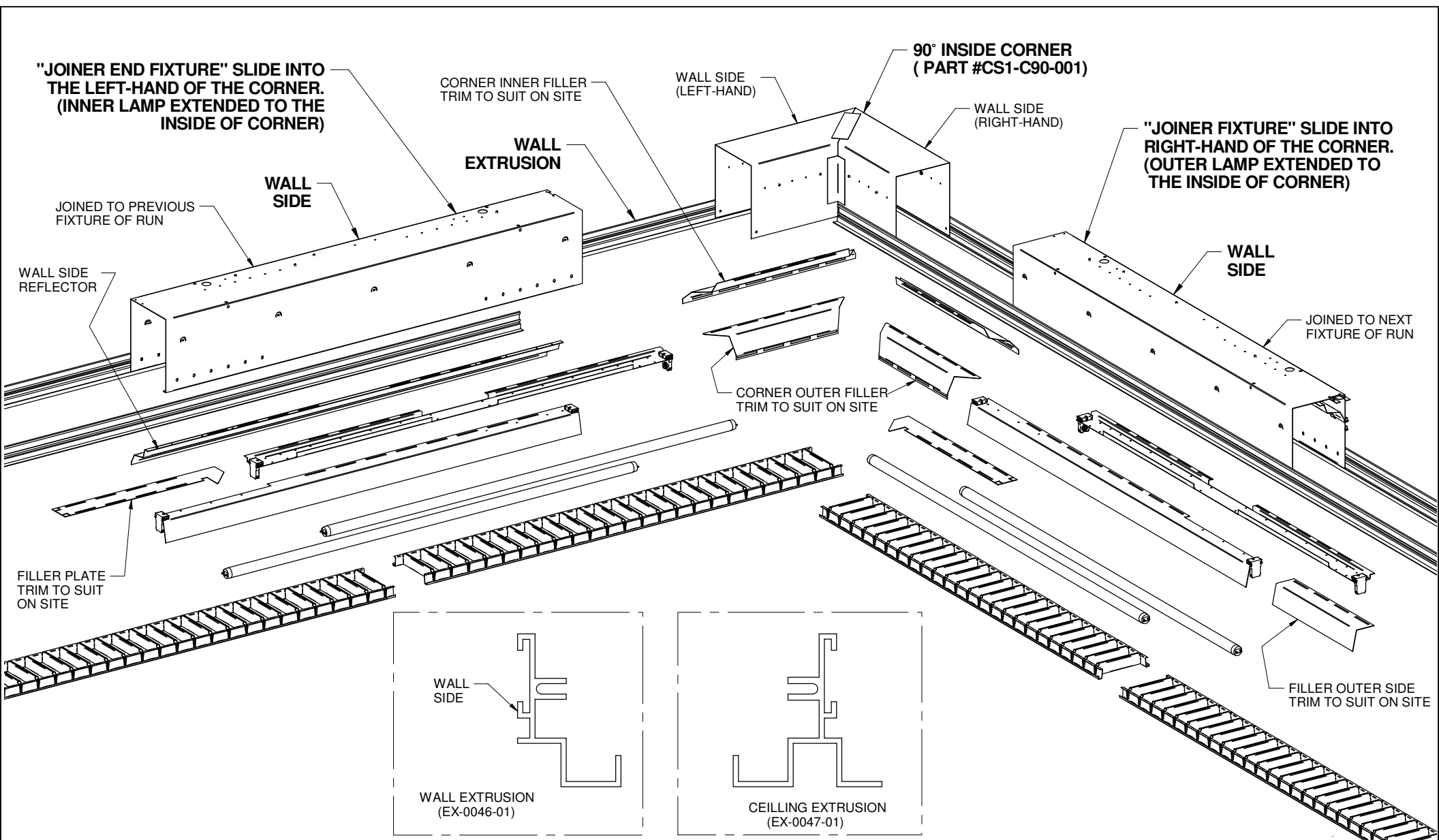


FIGURE-D

MATERIAL	BY	TITLE INSTALLATION INSTRUCTION -CS1-	
FINISH	CHK'D	PERIMETER	
DATE	SCALE	METALUMEN	DWG NO.
05/07/12	NTS		
SHT 4	OF 4	IS-CS1-01	



"JOINER END FIXTURE" SLIDE INTO THE LEFT-HAND OF THE CORNER. (INNER LAMP EXTENDED TO THE INSIDE OF CORNER)

CORNER INNER FILLER TRIM TO SUIT ON SITE

WALL SIDE (LEFT-HAND)

90° INSIDE CORNER (PART #CS1-C90-001)

WALL SIDE (RIGHT-HAND)

"JOINER FIXTURE" SLIDE INTO RIGHT-HAND OF THE CORNER. (OUTER LAMP EXTENDED TO THE INSIDE OF CORNER)

WALL EXTRUSION

WALL SIDE

WALL SIDE

JOINED TO PREVIOUS FIXTURE OF RUN

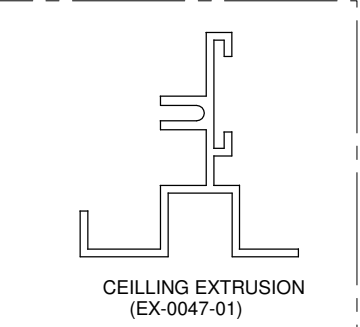
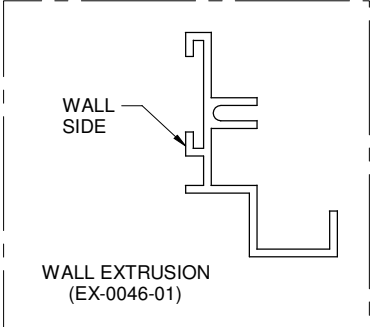
WALL SIDE REFLECTOR

JOINED TO NEXT FIXTURE OF RUN

CORNER OUTER FILLER TRIM TO SUIT ON SITE

FILLER PLATE TRIM TO SUIT ON SITE

FILLER OUTER SIDE TRIM TO SUIT ON SITE



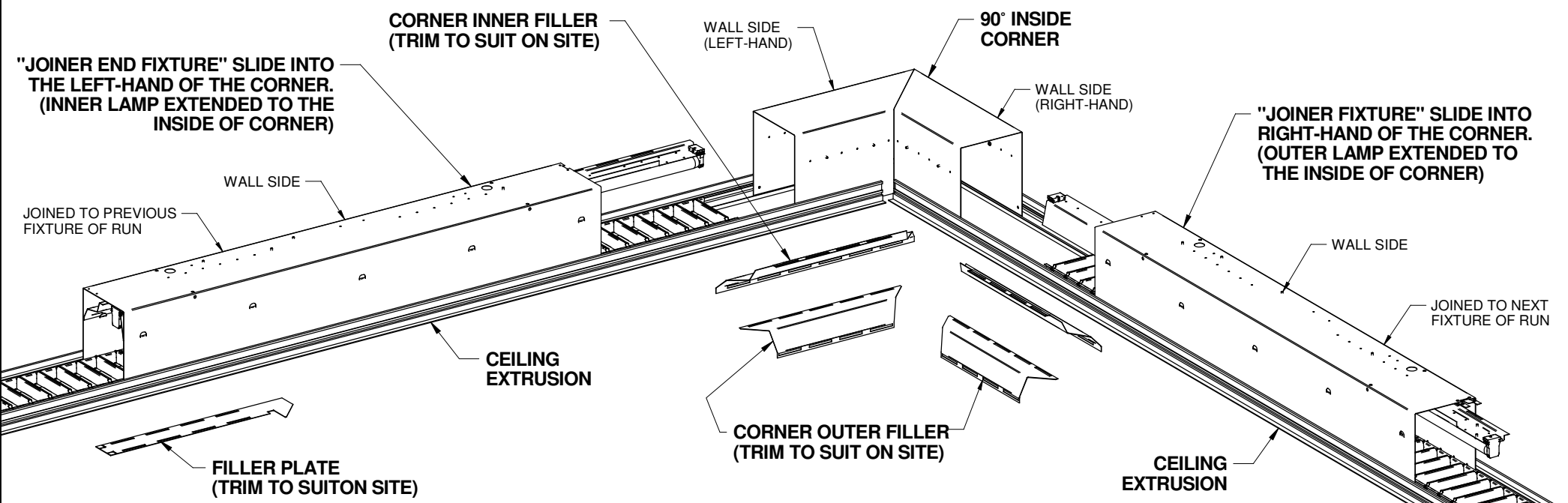
REV	ECN #	BY	DATE
00			

UNLESS OTHERWISE SPECIFIED TOLERANCES DIMENSIONS ARE IN METRIC  
 X ± .8  
 Y ± .25  
 .XX ± .10  
 ALL ANGLES + 5°  
 REMOVE SHARP CORNERS

MATERIAL:	DRAWN BY: CD
FINISH: Per Spec	CHECKED BY: XX
DATE: 07/09/27	SCALE: NTS
WEIGHT:	SHEET 1 OF 2

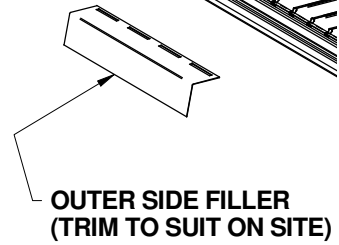
TITLE: INSIDE CORNER INSTALLATION INSTRUCTIONS

METALUMEN DWG. NO. IS-CSIB-C90-01



**\*INSTALLATION STEPS:**

- 1) - FIRST INSTALL WALL EXTRUSION AND CEILING EXTRUSION IN PLACE. (ALL EXTRUSIONS ARE SUPPLIED AT 10 FEET LONG.)
- 2) - THEN INSTALL 90° INSIDE CORNER AND SECURE CORNER TO BOTH EXTRUSIONS USING #8 SELF TAPPING SCREWS.
- 3) - NEXT INSTALL "JOINER END FIXTURE" AND SLIDE INSIDE OF LEFT-HAND CORNER APPROX. 50.8mm [2.0"] RECOMMENDED.
  - REMOVE OUTER SECTION LAMP, INNER REFLECTOR AND INNER SECTION LAMP, EXTEND INNER LAMP SECTION TO THE INSIDE OF CORNER TO A MAXIMUM OF 298mm [11.7"].
  - SECURE INNER LAMP SECTION WITH SCREWS, RE-INSTALL INNER REFLECTOR AND OUTER SECTION LAMP.
- 4) - SIMILAR STEPS, SLIDE "JOINER FIXTURE" TO THE RIGHT-HAND OF THE CORNERS APPROX. 50.8mm [2.0"] RECOMMENDED.
  - EXTEND THE OUTER SECTION LAMP TO THE INSIDE OF CORNER TO A MAXIMUM OF 201mm [7.9"].
  - SECURE OUTER LAMP SECTION WITH SCREWS.
- 5) - TRIM TO SUIT AND INSTALL CORNER INNER AND OUTER FILLERS.
- 6) - TRIM TO SUIT AND INSTALL FILLER PLATES.
- 7) - TRIM TO SUIT AND INSTALL OUTER SIDE FILLER.
- 8) - INSTALL PARABOLIC LOUVERS (OPTION) AND TRIM TO SUIT.
  - (\*NOTE: ALL PARABOLIC LOUVERS ARE PROVIDED AT 4 FEET LONG.)



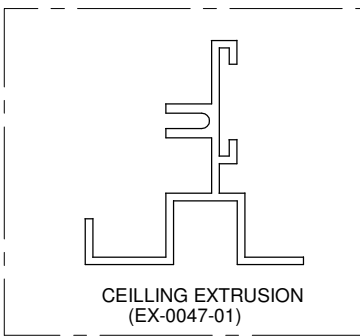
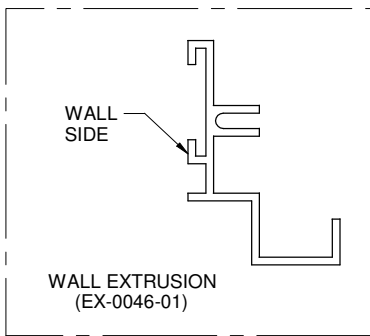
REV	ECN #	BY	DATE
00			

UNLESS OTHERWISE SPECIFIED TOLERANCES DIMENSIONS ARE IN METRIC  
 X ± .8  
 XX ± .25  
 XXX ± .10  
 ALL ANGLES + .5°  
 REMOVE SHARP CORNERS

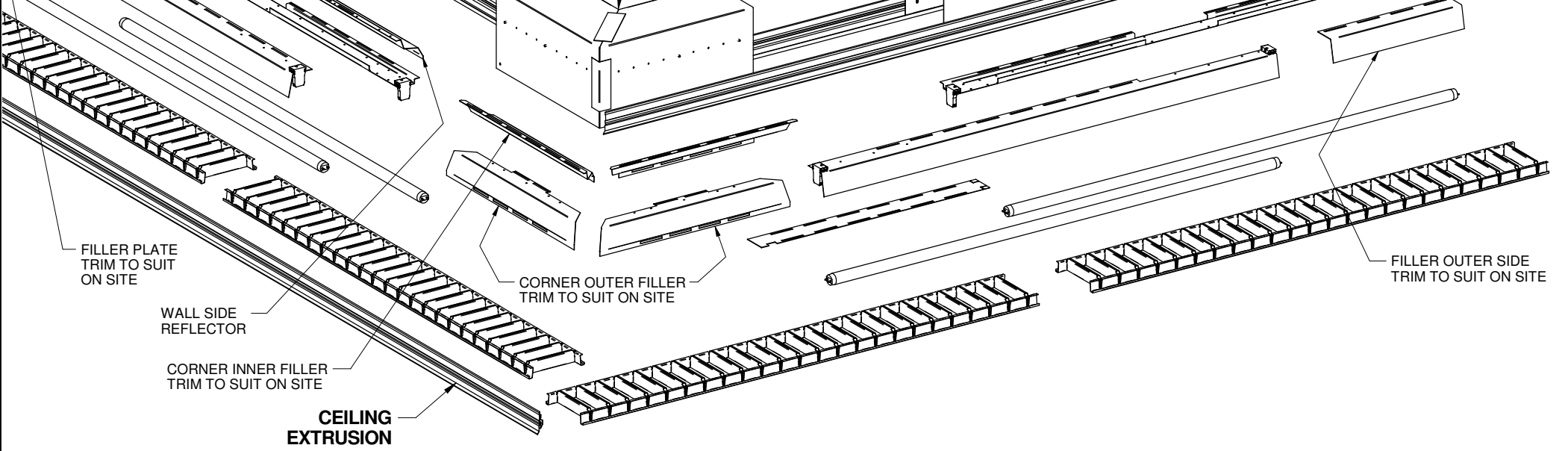
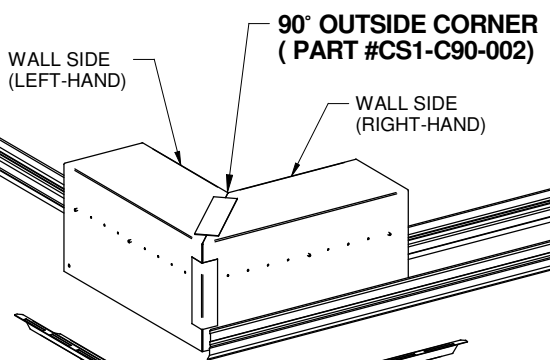
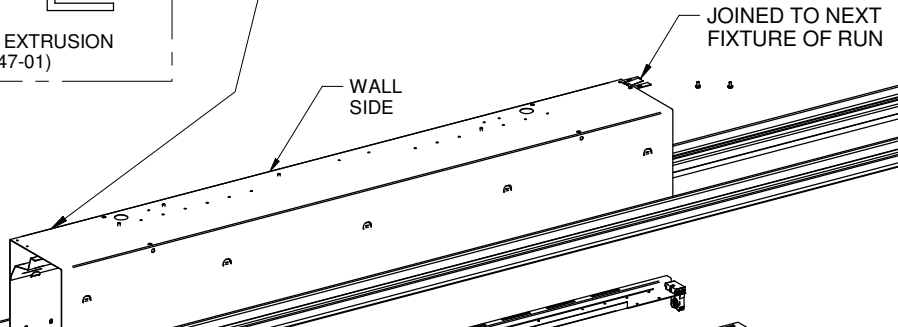
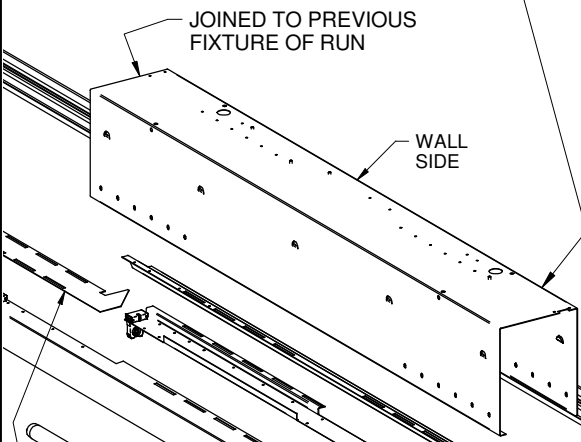
MATERIAL:	DRAWN BY: CD
FINISH: Per Spec	CHECKED BY: XX
DATE: 07/09/27	SCALE: NTS
WEIGHT:	SHEET 2 OF 2

TITLE	INSIDE CORNER INSTALLATION INSTRUCTIONS
<b>METALUMEN</b>	DWG. NO. IS-CSIB-C90-01

**"JOINER END FIXTURE" SLIDE INTO THE LEFT-HAND OF THE CORNER. (INNER LAMP EXTENDED TO THE INSIDE OF CORNER)**



**"JOINER FIXTURE" SLIDE INTO RIGHT-HAND OF THE CORNER. (OUTER LAMP EXTENDED TO THE INSIDE OF CORNER)**



REV	ECN #	BY	DATE
00			

UNLESS OTHERWISE SPECIFIED TOLERANCES DIMENSIONS ARE IN METRIC  
X ± .8  
Y ± .25  
ZXX ± .10  
ALL ANGLES + 5°  
REMOVE SHARP CORNERS

MATERIAL:	DRAWN BY: CD
FINISH: Per Spec	CHECKED BY: XX
DATE: 07/10/05	SCALE: NTS
WEIGHT:	SHEET 1 OF 2

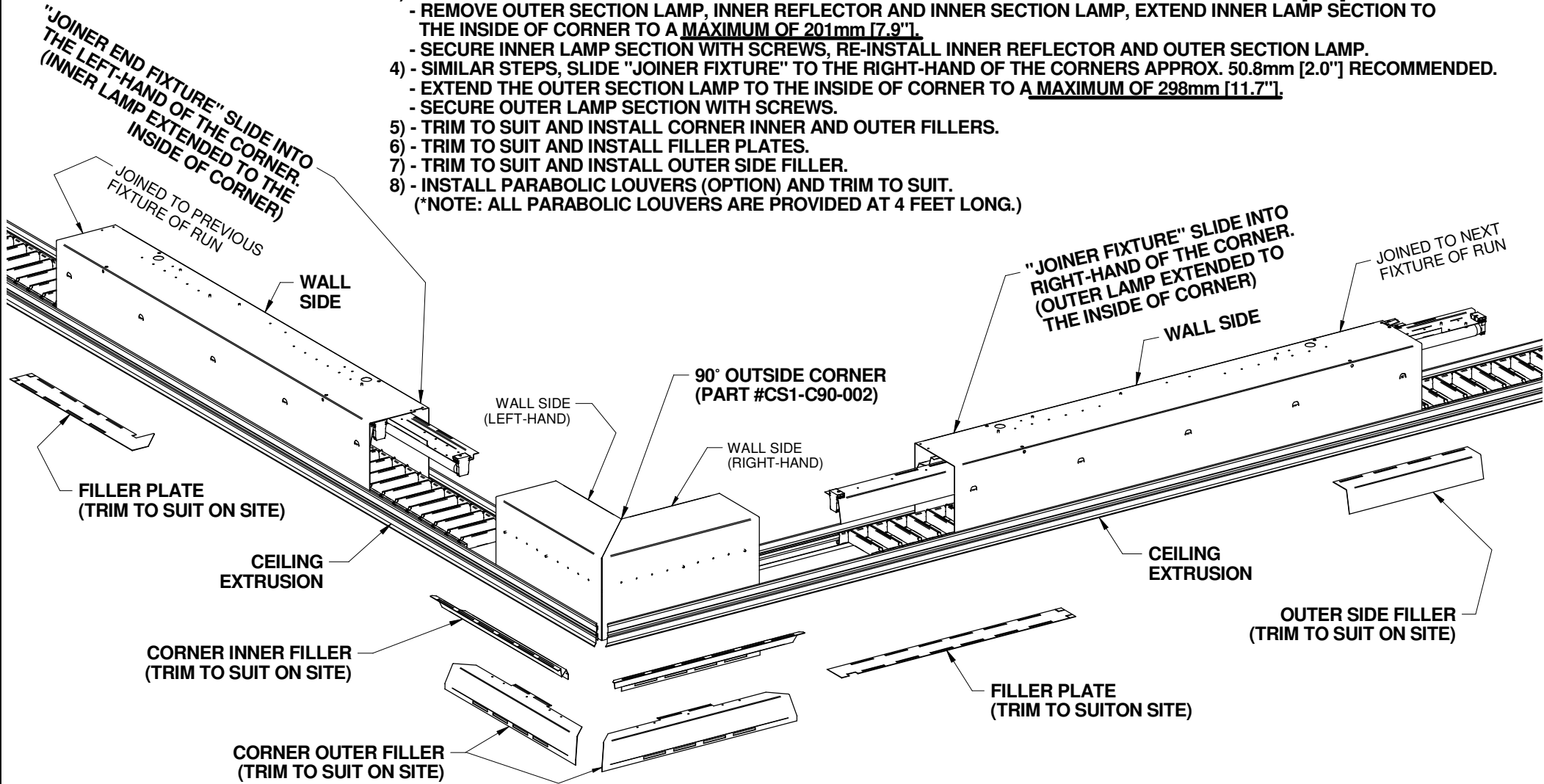
TITLE OUTSIDE CORNER INSTALLATION INSTRUCTIONS

**METALUMEN** DWG. NO. IS-CSIB-C90-02

**\*INSTALLATION STEPS:**

- 1) - FIRST INSTALL WALL EXTRUSION AND CEILING EXTRUSION IN PLACE. (ALL EXTRUSIONS ARE SUPPLIED AT 10 FEET LONG.)
- 2) - THEN INSTALL 90° INSIDE CORNER AND SECURE CORNER TO BOTH EXTRUSIONS USING #8 SELF TAPPING SCREWS.
- 3) - NEXT INSTALL "JOINER END FIXTURE" AND SLIDE INSIDE OF LEFT-HAND CORNER APPROX. 50.8mm [2.0"] RECOMMENDED.
  - REMOVE OUTER SECTION LAMP, INNER REFLECTOR AND INNER SECTION LAMP, EXTEND INNER LAMP SECTION TO THE INSIDE OF CORNER TO A MAXIMUM OF 201mm [7.9"].
  - SECURE INNER LAMP SECTION WITH SCREWS, RE-INSTALL INNER REFLECTOR AND OUTER SECTION LAMP.
- 4) - SIMILAR STEPS, SLIDE "JOINER FIXTURE" TO THE RIGHT-HAND OF THE CORNERS APPROX. 50.8mm [2.0"] RECOMMENDED.
  - EXTEND THE OUTER SECTION LAMP TO THE INSIDE OF CORNER TO A MAXIMUM OF 298mm [11.7"].
  - SECURE OUTER LAMP SECTION WITH SCREWS.
- 5) - TRIM TO SUIT AND INSTALL CORNER INNER AND OUTER FILLERS.
- 6) - TRIM TO SUIT AND INSTALL FILLER PLATES.
- 7) - TRIM TO SUIT AND INSTALL OUTER SIDE FILLER.
- 8) - INSTALL PARABOLIC LOUVERS (OPTION) AND TRIM TO SUIT.
 

(\*NOTE: ALL PARABOLIC LOUVERS ARE PROVIDED AT 4 FEET LONG.)



REV	ECN #	BY	DATE
00			

UNLESS OTHERWISE SPECIFIED TOLERANCES DIMENSIONS ARE IN METRIC  
 X ± .8  
 Y ± .25  
 .XX ± .10  
 ALL ANGLES + 5°  
 REMOVE SHARP CORNERS

MATERIAL:	DRAWN BY: CD
FINISH: Per Spec	CHECKED BY: XX
DATE: 07/10/05	SCALE: NTS
WEIGHT:	SHEET 2 OF 2

TITLE: OUTSIDE CORNER INSTALLATION INSTRUCTIONS
<b>METALUMEN</b> DWG. NO. IS-CSIB-C90-02