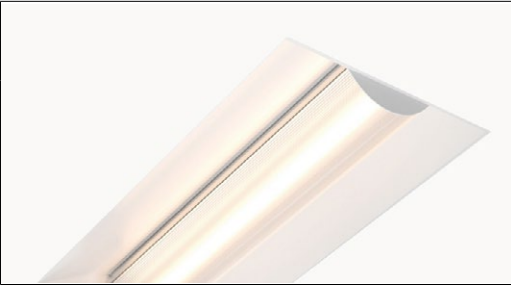
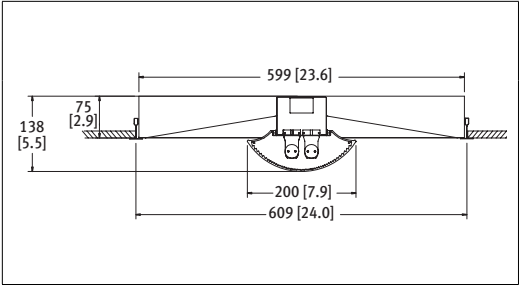


Commons HC01

Fluorescent . Recessed



CAT #:
PREP BY:
DATE:
PROJECT:
TYPE:
NOTES:

ORDERING LOGIC

HC01			Optics							
# of lamps	Source	Length	Up	Down	Finish	Ballast	Circuitry	Mounting	Voltage	IC
1 = 1 Lamp	T8		PL		W = White			T		
2 = 2 Lamps	T5									
	T5HO		PL = Prismatic Acrylic Dropped Curved Lens		E = Electronic Instant Start (T8)			Mounting - Recessed		
	Size				R = Programmed Rapid Start			T = Recessed T-Bar		
	22 = 2 x 2'				D1 = 0-10V Dimming					Integrated Control (IC)
	24 = 2 x 4'				D2 = DALI					None (leave space empty)

SPECIFICATIONS

Due to the Continuous Improvement Policy at Metalumen, we reserve the right to change our specifications without notice.

Housing: Housing is die formed of code gauge, prime cold rolled steel. Heavy gauge end plates are securely attached with screws for strength and rigidity and the elimination of gaps, KOs are provided for continuous row wiring. Large access plate for supply connection.

Optics: Reflector are coated with an electrostatically applied, white powder coat finish for luminous uniformity. Average minimum reflectance 90%. Positively retained frosted acrylic extruded profile lenses provide a soft but effective distribution of light.

Finish: Matte, electrostatically applied, white powder coat finish, average minimum reflectance 90%.
Weight: 2x2 - 7.0 kg/300mm [15.4 lb/ft]
 2x4 - 14.1 kg/300mm [31 lb/ft]
Mounting: Recessed mounting into exposed or concealed T-Bar.

Ballast: Instant Start, Programmed Rapid Start, 0-10V Dimming, DALI. Ballast can be removed from below without the use of tools.
Approvals: Certified to NRTL and IES testing standards. This product is cULus listed.
Environment: Suitable for dry locations.

WARRANTY

Metalumen will warrant a one year parts and labour warranty. Warranty is valid if luminaire is installed and used according to specification. The Ballast will carry a standard 5 year warranty by the manufacturer. If defective, Metalumen will send replacement ballasts or drivers at no cost along with detailed replacement instructions and instructions on how to return defective components to Metalumen.

APPROVALS

Signature

012915

Date

FILE NAME: Commons_HC01_SPEC_SHEET

570 Southgate Drive, Guelph, Ontario N1G 4P6
 Mailing Address: P.O. Box 1779 Guelph, Ontario, N1H 6Z9

1.800.621.6785 | T 519.822.4381 | F 519.822.4589
www.metalumen.com

Metalumen

FEATURES

H MEDILUMEN // Healthcare Lighting
Every product in our broad line of healthcare luminaires has been strategically engineered to meet modern healthcare demands while addressing patient needs and aesthetic requirements.

C COMMERCIAL // Commercial Lighting - With over 30 years of successful architectural lighting, providing unique concept and installation solutions has become second nature. Metalumen's Start to End Development Process results in unique performance,

design and architectural requirements from concept through implementation. Metalumen's Lighting Solutions have been applied to customer projects requiring: high profile architectural installations; improved energy efficiency; retrofit installations; unique installations. Metalumen can

provide top-quality innovative fixtures when and where they are needed and, at the same time, allow the customer to determine their level of involvement in Metalumen's Start to End Development Process.

PHOTOMETRIC DATA

2 T5HO
2x4

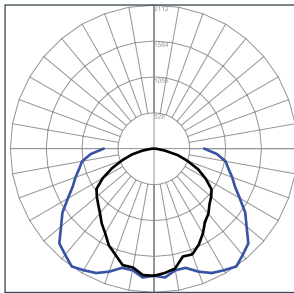
File Name: HC01-2T5HO-4-PL
Luminaire Lumens: 7528
Efficiency: 84 %
Efficacy: 64 lms/W
Total Watts: 118
Optics Up: None
Optics Down: Prismatic Acrylics Lens

COEFFICIENTS OF UTILIZATION

Zonal Cavity Method Effective Floor Cavity Reflectance = .20

RC	80				70				50			
	RW	70	50	30	10	70	50	30	10	50	30	10
RCR												
0	100	100	100	100	98	98	98	98	94	94	94	
1	89	84	79	75	87	82	78	74	78	75	71	
2	80	71	65	59	77	70	63	58	67	61	57	
3	72	62	54	47	70	60	53	47	58	51	46	
4	65	54	46	39	63	53	45	39	51	44	38	
5	60	48	39	33	58	47	39	33	45	38	33	
6	55	43	35	29	53	42	34	28	40	33	28	
7	51	39	31	25	49	38	30	25	36	30	25	
8	47	35	27	22	46	34	27	22	33	27	22	
9	44	32	25	20	43	31	24	20	30	24	19	
10	41	29	22	18	40	29	22	18	28	22	17	

PHOTOMETRIC CURVE



CANDLE DISTRIBUTION

Vertical Angle	Horizontal Angle				
	0	45	90	135	180
0	1184.22	1184.22	1184.22	1184.22	1184.22
5	1140.53	1158.09	1148.97	1147.13	1135
10	1125.1	1163.94	1205.32	1172.47	1135.36
15	1097.63	1171.67	1228.72	1159.25	1086.39
20	1046.87	1168.88	1261.94	1175.74	1050.79
25	994.62	1183.49	1277.03	1178.82	990.65
30	937.95	1173.81	1297.02	1164.18	964.66
35	878.06	1158.82	1320.08	1156.24	891.31
40	822.47	1134.01	1320.62	1123.24	835.32
45	747.8	1084.32	1289.59	1084.55	753.93
50	699.71	1031.24	1240.09	1028.12	691.12
55	605.32	952.14	1161.71	964.71	606.55
60	507.51	874.47	1082.3	869.8	506.66
65	395.62	772.35	978.7	775.59	397.08
70	295.65	655.52	842.9	660.52	295.81
75	199.93	526.28	691.97	530.63	199.41
80	109.42	355.31	410.29	357.1	113.26
85	44.75	133.54	116.14	130.32	44.48
90	8.28	8.58	7.45	8.78	8.21

LUMINANCE DATA (CD/M²)

Vertical Angle	Horizontal Angle		
	0	45	90
45	1554	2158	2482
55	1643	2158	2399
65	1442	2040	2359
75	1038	1872	2749
85	263	2000	3649

Corridor Installation

LAMPING: 2 lamps
CORRIDOR WIDTH: 3m [10']
CEILING HEIGHT: 2.7m [9']
FIXTURE SPACING: 4.9m [16']
REFLECTANCES: 80/50/20
AVERAGE ILLUMINATION: 21 FC

11.9	14.1	18.7	22.0	24.0	23.4	21.9	20.0	19.7	20.3	22.5	24.3	25.7	24.4	22.6	20.3	19.6	19.9	21.8	23.3	24.0	22.0	18.9	15.2	13.3
13.1	15.3	19.4	22.6	24.7	23.9	22.4	20.4	20.0	20.7	23.1	24.9	26.4	25.0	23.1	20.7	20.0	20.3	22.4	23.9	24.6	22.6	19.4	15.5	13.5
14.0	15.8	19.6	22.8	24.8	24.1	22.5	20.5	20.2	20.8	23.2	25.1	26.6	25.1	23.2	20.8	20.1	20.5	22.5	24.0	24.8	22.7	19.5	15.6	13.6
13.6	15.5	19.3	22.5	24.6	23.8	22.3	20.3	20.0	20.6	23.0	24.9	26.3	24.8	23.0	20.6	19.9	20.3	22.3	23.8	24.5	22.5	19.2	15.4	13.5
13.1	14.8	18.3	21.5	23.5	22.9	21.5	19.6	19.3	19.9	22.0	23.8	25.1	23.9	22.2	19.9	19.2	19.5	21.3	22.8	23.5	21.6	18.6	14.9	13.0