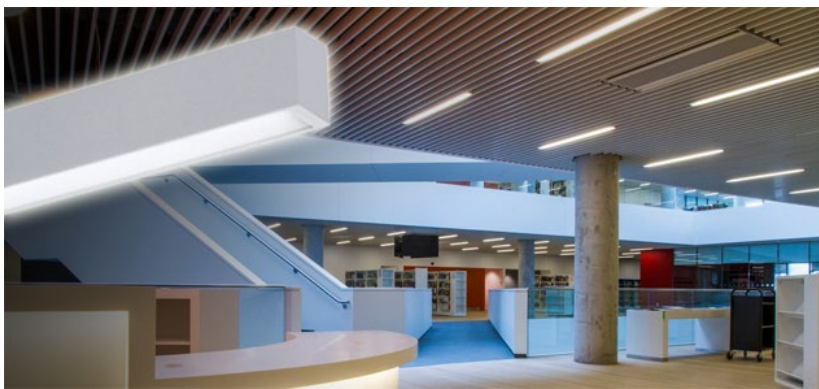


PROJECT SPOTLIGHT

PROJECT: [Halifax Central Library](#)
 PRODUCTS: [RM2D and RM2Dl](#)
 AGENT: Focus [Electrical Sales Inc.](#)

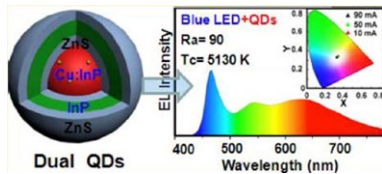


Featured in AZURE JUNE 2015 issue, CNN as top 10 followed projects in 2014:
<http://www.azuremagazine.com/article/10-projects-were-following-in-2014/>
<http://www.azuremagazine.com/article/out-now-the-office-issue/>



NEWS

Dual Emissive Cu:InP/ZnS/InP/
 ZnS Nanocrystals: Single-Source
 “Greener” Emitters with Flexibly
 Tunable Emission



Single-phase “greener” phosphor with broadband emission made of colloidal quantum dots (QDs) are desirable for use as color converters in white light-emitting diodes (WLEDs). A recent report in Chemistry of Materials explains how research groups from China and Singapore have developed an advanced synthetic method, in conjunction with band gap engineering, to produce a single-phase semiconductor nanophosphor with flexibly tunable dual emissions covering the visible to near-infrared region (i.e., single-source broadband emission).

[Read More](#)

Metalumen returns to Light Fair 2015!

To celebrate the momentous occasion, visitors were treated to an exclusive preview of some of Metalumen’s new up-coming product lines. Here are just a few of those products...



EDUCATION > AIA/CQPL/IDCEC

Metalumen is proud to be CEU accredited!

We are now an accredited provider for the American Institute of Architects (AIA), Interior Design Continuing Education Council (IDCEC) and National Council on Qualifications for the Lighting Professions (NCQLP) for continuing education. All our lighting focused seminars demonstrate best practices in lighting application, strategies in energy conservation, and human centric drivers for wellbeing per application and maintenance factors. Each seminar is 1 to 2 hours in length and qualifies for 0.2 to 2.0 CEU, LEU and LU credits.

