

Scene Photo Graphics

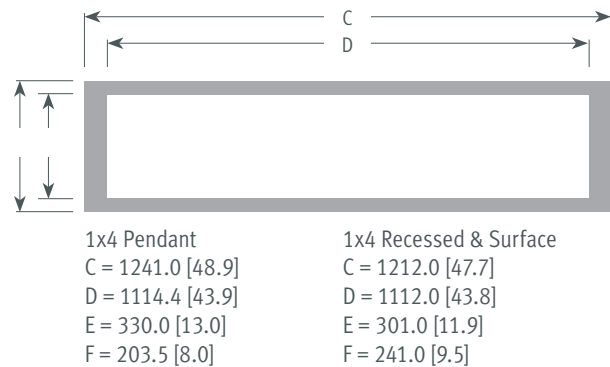
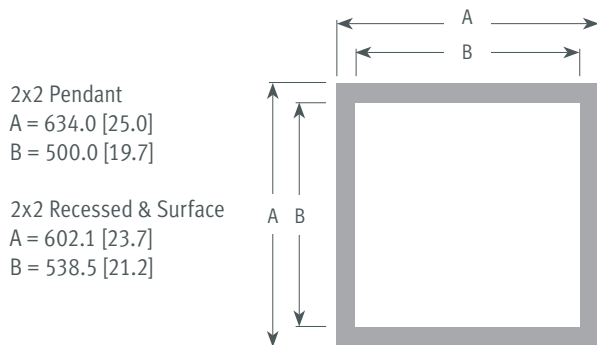
LED SCE & SCEM . Pendant/Surface/Recessed



| | |
|----------|--------|
| CAT #: | |
| PREP BY: | NOTES: |
| DATE: | |
| PROJECT: | |
| TYPE: | |

| | |
|------------------------|--|
| <p>PENDANT</p> | |
| <p>RECESSED</p> | |
| <p>SURFACE</p> | |

Please see Scene spec sheets at www.metalumen.com/?s=scene for more cross sections.



TO CLEAN THE OPTICS: Gently wipe down the optics with a clean, dry cloth to remove any dust and light residues.

For heavier smudges, spray clean cloth with mild soap and water solution and gently wipe optics surface.

WARNING: Hard wiping and abrasive cloths will scratch the optics. DO NOT USE cleaning products containing alcohol or acetone which will damage the optics.



ORDERING LOGIC

PART NUMBER

Part number example: SCE-2L50K-22-G1A-W-L71-P1-1-NR

| | | | | | | | | | | | |
|--------------|--------------|------|--------|----------------------------|--------|-----------|-----------|----------|---------|----------|-------------|
| SCE | 2L50K | | | | | 1 | | | | N | |
| Series/Model | Color Temp | Size | Optics | Configuration ¹ | Finish | LL/Driver | Circuitry | Mounting | Voltage | Controls | Driver Loc. |

| PENDANT | Color Temp | Optics | Configuration ¹ | Light Level (LL) /Driver | Mounting | Voltage | Controls |
|---------|---|------------------------|---|--------------------------|---|---------------------------------------|------------------------|
| | 2L50K = 5000K | G1 = Sky | Finish | L7 = for 2x2 only | P1 = Power Over Aircraft Cable 18" | 1 = 120 V | N = None |
| | Size | G2 = Ocean Life | W = White | L6 = for 1x4 only | P2 = Power Over Aircraft Cable 48" | 2 = 277 V | Driver Location |
| | 22 = 2 x 2' | G3 = Mountains | C = Custom Finish Specify RAL#: | Circuitry | P3 = Power Over Aircraft Cable 60" | 3 = 347 V (Consult factory) | R = Remote |
| | 14 = 1 x 4' | G4 = Beach | AM = Antimicrobial White Paint | 1 = 1 Circuit | | 4 = UNV (120 - 277 V) | |
| | CG = Custom Graphic ² | | | | | | |

| RECESSED | Color Temp | Optics | Configuration ¹ | Light Level (LL) /Driver | Mounting | Voltage | Controls |
|----------|---|------------------------|---|--------------------------|-----------------------------|---------------------------------------|----------------------------|
| | 2L50K = 5000K | G1 = Sky | Finish | L7 = for 2x2 only | T = Recessed T-Bar | 1 = 120 V | N = None |
| | Size | G2 = Ocean Life | W = White | L6 = for 1x4 only | D = Recessed Drywall | 2 = 277 V | Driver Location |
| | 22 = 2 x 2' | G3 = Mountains | C = Custom Finish Specify RAL#: | Circuitry | | 3 = 347 V (Consult factory) | N = None (Integral) |
| | 14 = 1 x 4' | G4 = Beach | AM = Antimicrobial White Paint | 1 = 1 Circuit | | 4 = UNV (120 - 277 V) | R = Remote |
| | CG = Custom Graphic ² | | | | | | |

| SURFACE | Color Temp | Optics | Configuration ¹ | Light Level (LL) /Driver | Mounting | Voltage | Controls |
|---------|---|------------------------|---|--------------------------|---|---------------------------------------|-----------------------------------|
| | 2L50K = 5000K | G1 = Sky | Finish | L7 = for 2x2 only | S = Surface (Remote Driver) | 1 = 120 V | N = None |
| | Size | G2 = Ocean Life | W = White | L6 = for 1x4 only | SI = Surface Integral (Integral Driver) | 2 = 277 V | Driver Location |
| | 22 = 2 x 2' | G3 = Mountains | C = Custom Finish Specify RAL#: | Circuitry | SC = Concrete or metal surface (Integral Driver) | 3 = 347 V (Consult factory) | No options. Leave space empty. |
| | 14 = 1 x 4' | G4 = Beach | AM = Antimicrobial White Paint | 1 = 1 Circuit | <i>Available for vertical or horizontal mounting</i> | 4 = UNV (120 - 277 V) | |
| | CG = Custom Graphic ² | | | | | | |

¹ See page 4 for configuration codes. | ² Customer must provide their own high-res PDF file.

SPECIFICATIONS

Due to the Continuous Improvement Policy at Metalumen, we reserve the right to change our specifications without notice.

Housing: Luminaire body is constructed with 22 gauge cold rolled steel and 20 gauge aluminum, and welded seams.

Optical System: The light emitted from the mid-flux LEDs is channeled inside Metalumen's AccuRay® optical plane where a precisely controlled micro dot matrix pattern directs, shapes and distributes the light throughout the material. A high performance optical reflector and diffuser further guide and extract the light with superb efficiency and beam control. Custom graphics must be provided by customer

in PDF format.

CRI: 83+ (5000K) (80 minimum)

Lumen Maintenance: At an ambient operating temperature of 25°C the LED lifetime expectancy ≥ 60 000hrs at L70.

Finish: The luminaire housing and associated parts are finished in highly reflective, matte powder coat white paint (91% reflectance) or antimicrobial white paint. For custom finish, consult factory.

Mounting: PENDANT: Aircraft cable complete with a Quick-Grip field adjustable suspension

system provides for quick and easy onsite alignment. RECESSED: Fits 9/16" and 15/16" T-Bars. Mounting brackets/clips provided. SURFACE: Mounting brackets provided. **Driver:** Metalumen offers dimming drivers as a standard on our entire LED product offering at 0-10V. Dimming is 10%-100% range Power factor is >90% with a Class 2 rating.

Light Output: We recommend using a dimmer to achieve optimal light levels and effect.

Options: Consult factory for Lutron driver

options:

- **LHE** H-Series Hi-Lume 1% EcoSystem Driver
- **LA2** A-Series Hi-Lume 1% 2-wire LED Driver
- **L5E** 5-Series EcoSystem LED Driver

Approvals: Certified to NRTL safety and IES Recommendation testing standards. All components are UL/CSA/QPS recognized or listed, RoHS, LM79, LM80 and LM82 compliant.

Environment: Suitable for dry or damp locations.



ORDERING LOGIC

PART NUMBER

Part number example: SCEM-2L50K-22-G1A-AM-L71-T-1-NRF

| | | | | | | | | | | | |
|--------------|--------------|------|--------|----------------------------|----------|-----------|-----------|----------|---------|----------|---------|
| SCEM | 2L50K | | | AM | 1 | | | N | | | |
| Series/Model | Color Temp | Size | Optics | Configuration ¹ | Finish | LL/Driver | Circuitry | Mounting | Voltage | Controls | Options |

| | | | | | | |
|-----------------|---|--------------------------|--|-----------------------------|------------------------------------|---------------------------------------|
| RECESSED | Color Temp | Optics | Configuration ¹ | Circuitry | Voltage | Controls |
| | 2L50K = 5000K | G1 = Sky | Finish | 1 = 1 Circuit | 1 = 120 V | N = None |
| | Size | G2 = Ocean Life | AM = Antimicrobial White Paint | Mounting | 2 = 277 V | Options |
| | 22 = 2 x 2' | G3 = Mountains | Light Level (LL) / Driver ³ | T = Recessed T-Bar | 3 = 347 V (Consult factory) | RF = Medical Power Line Filter |
| | 14 = 1 x 4' | G4 = Beach | L7 = for 2x2 only | D = Recessed Drywall | 4 = UNV (120 - 277 V) | N = None |
| | CG = Custom Graphic ² | L6 = for 1x4 only | | | | |

| | | | | | | |
|----------------|---|--------------------------|---------------------------------------|---|------------------------------------|---------------------------------------|
| SURFACE | Color Temp | Optics | Configuration ¹ | Circuitry | Voltage | Controls |
| | 2L50K = 5000K | G1 = Sky | Finish | 1 = 1 Circuit | 1 = 120 V | N = None |
| | Size | G2 = Ocean Life | AM = Antimicrobial White Paint | Mounting | 2 = 277 V | Options |
| | 22 = 2 x 2' | G3 = Mountains | Light Level/Driver ³ | S = Surface (Remote Driver) | 3 = 347 V (Consult factory) | RF = Medical Power Line Filter |
| | 14 = 1 x 4' | G4 = Beach | L7 = for 2x2 only | Available for vertical or horizontal mounting | 4 = UNV (120 - 277 V) | N = None |
| | CG = Custom Graphic ² | L6 = for 1x4 only | | | | |

¹ See page 4 for configuration codes. | ² Customer must provide their own high-res PDF file. | ³ All drivers remote mounted

SPECIFICATIONS

Due to the Continuous Improvement Policy at Metalumen, we reserve the right to change our specifications without notice.

Housing: Luminaire body is constructed with 100% aluminum with welded seams and stainless steel hardware.

Optical System: The light emitted from the mid-flux LEDs is channeled inside Metalumen's AccuRay® optical plane where a precisely controlled micro dot matrix pattern directs, shapes and distributes the light throughout the material. A high performance optical reflector and diffuser further guide and extract the light with superb efficiency and beam control. Custom

graphics must be provided by customer in PDF format.

CRI: 83+ (5000 K) (80 minimum)

Lumen Maintenance: At an ambient operating temperature of 25°C the LED lifetime expectancy ≥ 60 000hrs at L70.

Finish: The luminaire housing and associated parts are finished in highly reflective, matte powder coat white paint (91% reflectance) or antimicrobial white paint. For custom finish, consult factory.

Mounting: RECESSED: Fits 9/16" and 15/16" T-Bars. Mounting brackets/clips provided. SURFACE: Mounting brackets provided.

Driver: Metalumen offers dimming drivers as a standard on our entire LED product offering at 0-10V. Dimming is 10%-100% range Power factor is > 90% with a Class 2 rating. All drivers remote mounted.

Light Output: We recommend using a dimmer to achieve optimal light levels and effect.

Options: Consult factory for Lutron driver

options:

- **LHE** H-Series Hi-Lume 1% EcoSystem Driver
- **LA2** A-Series Hi-Lume 1% 2-wire LED Driver
- **L5E** 5-Series EcoSystem LED Driver

Approvals: Certified to NRTL safety and IES Recommendation testing standards. All components are UL/CSA/QPS recognized or listed, RoHS, LM79, LM80 and LM82 compliant.

Environment: Suitable for dry or damp locations.

MRI COMPLIANCE INFORMATION

NON-FERROUS COMPONENTS

Due to the strong MRI magnetic force, a projectile effect of over 40mph into the tube can be generated by even small ferrous objects, potentially causing serious injury. Therefore, all MRI fixtures are carefully engineered with non-ferrous materials. Housings made from aluminum extrusion,

internal parts are built from aluminum or plastics, all hardware are from SS.

REMOTE MOUNTING

All MRI compliant luminaires are to have remote mounted drivers due to the steel components used in building the LED drivers. In an LED configuration, the electricity going

from the driver to the fixture is Direct Current (DC) which further reduces the chance of interference.

ELECTRONIC NON-INTERFERENCE


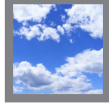




Luminaires meet the most stringent requirements for electromagnetic compatibility. MRI machines emit powerful

radio frequency pulses and imaging may be compromised by electronics interference within the area. All fixtures should not interfere with, nor should they be susceptible to, these frequencies. An RF filter can be utilized to eliminate interference.

PHOTO GRAPHICS & CONFIGURATION CODES

Part number example: SCE-2L50K-22-**G1** **A**-W-L71-P1-1-NR

Photo Graphic Code _____↑ _____↑ Configuration Code

| PHOTOGRAPHIC CODE | CONFIGURATION CODE |
|--|--|
| <p>G1</p>  | <div style="display: flex; justify-content: space-around; align-items: flex-start;"> <div style="text-align: center;"> <p>A</p>  </div> <div style="text-align: center;"> <p>B</p>  </div> <div style="text-align: center;"> <p>J</p>  </div> <div style="text-align: center;"> <p>F</p>  </div> </div> <div style="margin-top: 10px;"> <p>K</p>  </div> <div style="margin-top: 10px; border: 1px solid black; padding: 5px; text-align: center;"> <p>M</p> <p>CUSTOM CONFIGURATION</p> <p><i>Consult factory for custom configurations</i></p> </div> |

Scene Photo Graphics LED SCE & SCEM . Pendant, Surface, Recessed

SKY CONFIGURATION CODES

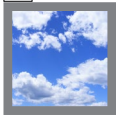
G1



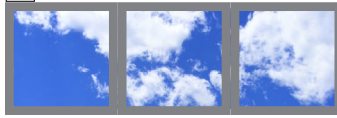
Part number example: SCE-2L50K-22-G1 A-W-L71-P1-1-NR

Photo Graphic Code  Configuration Code 

A



C



D



B



F



G



E



H



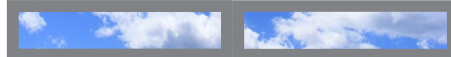
I



J



K



L



M

**CUSTOM
CONFIGURATION**

*Consult factory for
custom configurations.*

Scene Photo Graphics LED SCE & SCem . Pendant, Surface, Recessed

OCEAN LIFE CONFIGURATION CODES

G2



Part number example: SCE-2L50K-22-G2 A-W-L71-P1-1-NR

Photo Graphic Code ↑ ↑ Configuration Code

A



C



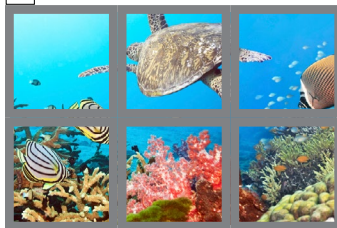
D



B



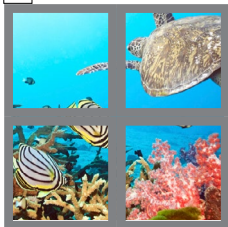
F



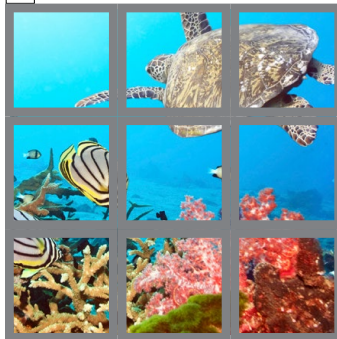
G



E



H



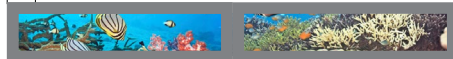
I



J



K



L



M

CUSTOM CONFIGURATION

Consult factory for custom configurations.

Scene Photo Graphics LED SCE & SCEM . Pendant, Surface, Recessed

MOUNTAINS CONFIGURATION CODES

G3



Part number example: SCE-2L50K-22-G3A-W-L71-P1-1-NR

Photo Graphic Code ↑ Configuration Code ↑

A



C



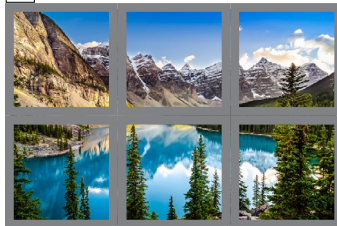
D



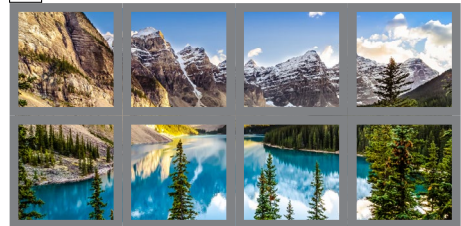
B



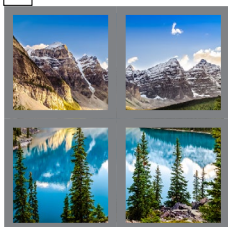
F



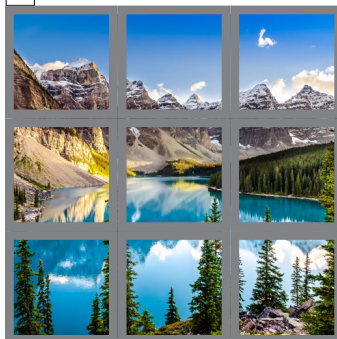
G



E



H



I



J



K



L



M

CUSTOM CONFIGURATION

Consult factory for custom configurations.

Scene Photo Graphics LED SCE & SC EM . Pendant, Surface, Recessed

BEACH CONFIGURATION CODES

G4



Part number example: SCE-2L50K-22-G4A-W-L71-P1-1-NR

Photo Graphic Code ↑ Configuration Code ↑

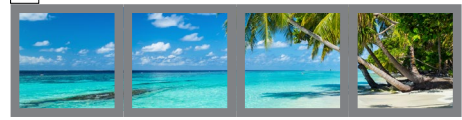
A



C



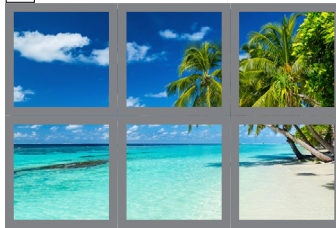
D



B



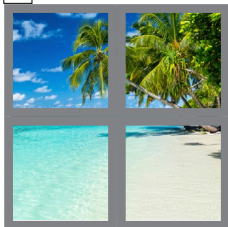
F



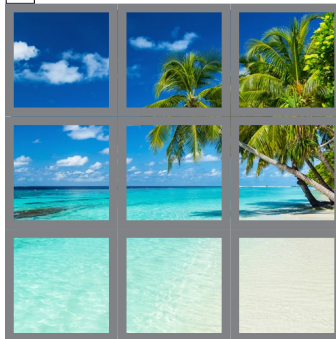
G



E



H



I



J



K



L



M

CUSTOM CONFIGURATION

Consult factory for custom configurations.