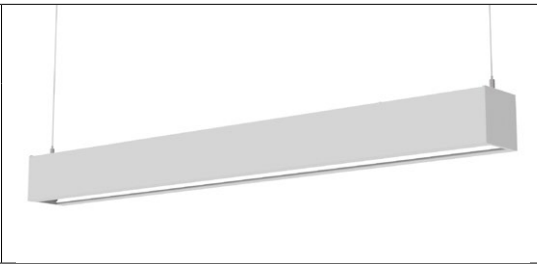
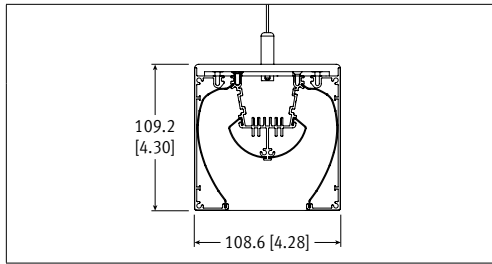


Mega M4P

LED . Pendant . Direct



CAT #:
PREP BY:
DATE:
PROJECT:
TYPE:
NOTES:

ORDERING LOGIC

Sample part number: M4P-2L35K-4-NN-SA-L31-PA-1-NN-C

Optics																					
M4P			N	N		1			N												
Series/Model	Color Temp	Length	Up	Down	Finish	LL/Driver	Circuitry	Mounting	Voltage	Control	Drive Loc. End Cap										
Color Temp		Optics Up		Light Levels (LL) /Driver		Circuitry		Voltage		Driver Location											
2L30K = 3000K		N = None		Fixture Lumens - Direct Light level measured at 3500K. Add 3% lumen output for 4000K or subtract 2% lumen output for 3000K.		1 = 1 Circuit		1 = 120 V		N = None (mounted integral)											
2L35K = 3500K		Optics Down				Mounting		2 = 277 V		R = Remote Driver Box											
2L40K = 4000K		N = None		<table><tr><th>0-10V Dimming (Standard)</th><th>3500k</th></tr><tr><td>L1</td><td>= 2436</td></tr><tr><td>L2</td><td>= 3100</td></tr><tr><td>L3</td><td>= 4456</td></tr><tr><td>L4</td><td>= 8521</td></tr></table>		0-10V Dimming (Standard)	3500k	L1	= 2436	L2	= 3100	L3	= 4456	L4	= 8521	PA = Pendant Aircraft Cable		3 = 347 V		RC = Remote Surface Canopy	
0-10V Dimming (Standard)	3500k																				
L1	= 2436																				
L2	= 3100																				
L3	= 4456																				
L4	= 8521																				
Length		Finish		Based on 4ft sections.		PT = Pendant Aircraft Cable for T-Bar		4 = UNV (120 - 277 V)		End Cap Options											
2 = 2 ft		B = Black				SS = Solid Stem		Control		C = Closed (Standard)											
4 = 4 ft		SA = Satin Aluminum				PP = Power Over Aircraft Cable *		N = None		O = Open											
8 = 8 ft		W = White				SELECT HANGER LENGTH AND HANGER FINISH ON P.2				X = Custom (Consult Factory)											
R = Continuous Rows (Consult factory)		C = Custom Finish Specify RAL#:																			

* Remote Mounted Driver Only

SPECIFICATIONS

Due to the Continuous Improvement Policy at Metalumen, we reserve the right to change our specifications without notice.

Housing: Rigid 3-piece extruded aluminum body with 22-gauge steel top cover plate.

End Caps: Steel powder coated, closed (standard) or semi-open end. Consult factory for custom end caps.

Optical System: MetaLED mid-flux LED technology transmits to internal smooth, high performance reflectors. Open luminaire, no lens design.

CRI: 83+ (3500K) (80 minimum for all CCT)

Lumen Maintenance: At an ambient operating temperature of 25°C, our LED system output remains useful at L85 > 60 000hrs.

Finish: Black, satin aluminum, or white powder coated paint finish. For custom finish, contact factory.

Mounting: Steel aircraft cable complete with a Quick-Grip field adjustable suspension system provides for quick and easy on-site alignment.

Drivers: Metalumen offers dimming drivers as a standard on our entire LED product offering at 0-10V. Dimming range is down to 1%. Power factor @ full load is >90% with a Class 2 rating.

Controls: Not available.

Options: Consult factory for Lutron driver options:

- L3DAE Hi-lume 1% EcoSystem LED Driver
- L3DA3W Hi-lume 1% 3-wire LED Driver

- LTEA2W Hi-lume 1% 2-wire LED Driver
- LDE1 Hi-lume 1% -H EcoSystem LED Driver
- LDE5 5-Series EcoSystem LED Driver

Approvals: Certified to NRTL safety and IES Recommendation testing standards. All components are UL/CSA/QPS recognized or listed, RoHS, LM79, LM80 and LM82 compliant.

Environment: Suitable for dry locations.

WARRANTY

Metalumen will warrant defective luminaires for 5 years from date of purchase. Warranty is valid if luminaire is installed and used according to specification. If defective, Metalumen will send replacement boards or drivers at no cost along with detailed replacement instructions and instructions on how to return defective components to Metalumen.

LUMINAIRE WATTAGE AND OUTPUT SPECIFICATION

Light Level	Wattage	Lumens Delivered	Efficacy (LPW)
L1	27.78	2436	87.7
L2	35.42	3100	87.5
L3	48.62	4456	91.6
L4	97.24	8521	87.6

APPROVALS

Signature

Date

FILE NAME: MEGA_M4P_LED_PA_PT_SS_SPEC_SHEET

20170302

570 Southgate Drive, Guelph, Ontario N1G 4P6
Mailing Address: P.O. Box 1779 Guelph, Ontario, N1H 6Z9

1.800.621.6785 | T 519.822.4381 | F 519.822.4589
www.metalumen.com

Metalumen

FEATURES



COMMERCIAL // Commercial Lighting - With over 30 years of successful architectural lighting, providing unique concept and installation solutions has become second nature. Metalumen's Start to End Development Process results in unique performance, design and architectural requirements from concept through implementation. Metalumen's Lighting Solutions have been

applied to customer projects requiring: high profile architectural installations; improved energy efficiency; retrofit installations; unique installations. Metalumen can provide top-quality innovative fixtures when and where they are needed and, at the same time, allow the customer to determine their level of involvement in Metalumen's Start to End Development Process.



Edulumen is a collection of premium luminaires that maximize both the functionality and performance of any educational facility. Based on maximum efficiency, integration of controls and exceptional design, Edulumen will earn high marks for meeting your requirements. Students challenge themselves throughout the day to achieve, and Metalumen is dedicated to this by

creating sustainable environments that foster enhanced educational experiences

M E T A LED LED boards with a raw efficacy of over 120lm/W, proprietary to Metalumen. A slim LED platform for any of your LED linear application.

HANGER LENGTH AND FINISH

Select Hanger Length and Finish:

HANGER FINISH	
<input type="checkbox"/>	White (Standard)
<input type="checkbox"/>	Custom Specify RAL#: _____

SOLID STEM - 1/2" OD STANDARD					
Standard supplied length is 18" (460mm). Hangers will be supplied at closest length. All other lengths are considered custom unless otherwise stated.					
	IMPERIAL (in)	METRIC (mm)		IMPERIAL (in)	METRIC (mm)
<input type="checkbox"/>	12	305	<input type="checkbox"/>	33	840
<input type="checkbox"/>	15	380	<input type="checkbox"/>	36	915
<input type="checkbox"/>	18	460	<input type="checkbox"/>	39	990
<input type="checkbox"/>	21	533	<input type="checkbox"/>	42	1067
<input type="checkbox"/>	24	610	<input type="checkbox"/>	45	1145
<input type="checkbox"/>	27	685	<input type="checkbox"/>	48	1220
<input type="checkbox"/>	30	760			
<input type="checkbox"/> Custom length (indicate length in inches): _____					

AIRCRAFT CABLE					
Total adjustment range is 6" up & down for each standard length. All other lengths are considered custom unless otherwise stated.					
	IMPERIAL (in)	METRIC (mm)		IMPERIAL (in)	METRIC (mm)
<input type="checkbox"/>	12	305	<input type="checkbox"/>	54	1372
<input type="checkbox"/>	18	460	<input type="checkbox"/>	60	1525
<input type="checkbox"/>	24	610	<input type="checkbox"/>	72	1830
<input type="checkbox"/>	30	760	<input type="checkbox"/>	96	2440
<input type="checkbox"/>	36	915	<input type="checkbox"/>	120	3050
<input type="checkbox"/>	42	1067	<input type="checkbox"/>	144	3660
<input type="checkbox"/>	48	1220			
<input type="checkbox"/> Custom length (indicate length in inches): _____					

PHOTOMETRIC DATA - 3500K

L3

File Name: M4P-2L35K-4-NN-L3
Luminaire Lumens: 4456
Total Watts: 48
Efficacy: 91.6 lms/W
Optics Up: None
Optics Down: None

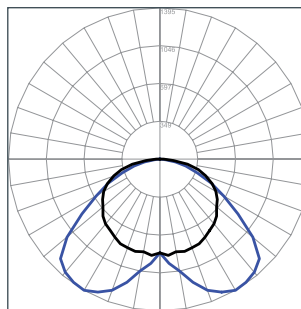
COEFFICIENTS OF UTILIZATION

Zonal Cavity Method

Effective Floor Cavity Reflectance = .20

RC	80				70				50			
RW	70	50	30	10	70	50	30	10	50	30	10	10
RCR												
0	119	119	119	119	116	116	116	116	111	111	111	111
1	108	103	98	94	105	100	96	92	96	92	89	89
2	97	88	81	75	94	86	80	74	83	77	72	72
3	88	77	68	61	85	75	67	60	72	65	59	59
4	80	67	58	51	77	66	57	50	63	55	49	49
5	73	59	50	43	71	58	49	43	56	48	42	42
6	67	53	43	37	65	52	43	36	50	42	36	36
7	62	48	38	32	60	47	38	32	45	37	31	31
8	57	43	34	28	56	42	34	28	41	33	28	28
9	53	39	31	25	52	39	30	25	37	30	25	25
10	50	36	28	22	48	35	27	22	34	27	22	22

PHOTOMETRIC CURVE



LUMINANCE DATA (CD/M²)

Vertical Angle	Horizontal Angle		
	0	45	90
45	6583	6614	6290
55	6812	6009	4323
65	7204	4065	2693
75	7203	2157	1373
85	4788	634	339

CANDLE DISTRIBUTION

Vertical Angle	Horizontal Angle				
	0	22.5	45	67.5	90
0	861.09	861.09	861.09	861.09	861.09
5	888.37	935.69	933.44	976.76	964.07
10	863.88	920.78	1002.59	1048.29	1045.73
15	879.4	946.87	1052.51	1140.32	1174.61
20	868.54	973.25	1139.57	1259.27	1283.6
25	860.31	1005.23	1196.17	1316.11	1349.22
30	830.85	998.01	1246.4	1349.76	1394.51
35	799.31	1017.54	1249.86	1346.61	1384.64
40	777.62	1026.33	1252.78	1330.82	1356.17
45	742.23	1004.97	1209.77	1286.43	1297.29
50	683.07	970.46	1158.7	1170.69	1118.28
55	646.12	919.2	1058.22	942.62	878.18
60	595.99	858.63	883.07	723.18	680.3
65	533.54	766.15	666.54	544	522.14
70	450.06	622.34	471.3	394.08	368.71
75	367.5	452.16	316.71	262.79	245.44
80	258.2	264.86	186.68	155.53	146.63
85	126.55	120.2	79.42	61.1	53.68
90	33.29	37.66	21.57	8.45	2.6