



NOTE: The following instructions provide general guidelines for product installation. For additional information consult the applicable electrical codes or contact factory directly for support before attempting anything with uncertainty.

CAUTION: Do not assemble fixture runs on floor.

WARNING: Risk of fire and electrical shock. **DISCONNECT POWER AT ELECTRICAL PANEL** before installing or servicing this product.

GENERAL SAFETY INSTRUCTIONS:

1. Read all instructions prior to installing this fixture.
2. This product must be installed in accordance with the applicable installation code by a person familiar with the construction and operation of the product and the hazards involved.
3. All wiring must be performed by a qualified electrician in accordance with national and local building and electrical codes.
4. This fixture must be suitably grounded for your protection against shock hazards and to assure proper operation.
5. Make sure that the power source conforms to the requirements of this fixture.

Specifications and design subject to change without notice.

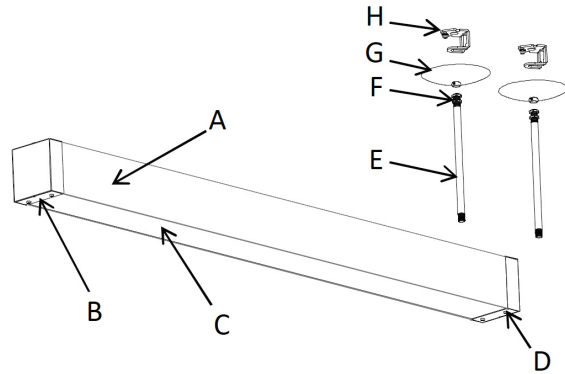
PARTS LIST

MAIN PARTS LIST

- | | |
|------------------------|-------------------|
| A. Luminaire Enclosure | F. Hex Nut |
| B. End Plate | G. Canopy |
| C. Lens | H. Hanger Bracket |
| D. End Screw | D. End Screw |
| E. Stem | E. Stem |

OTHER PARTS

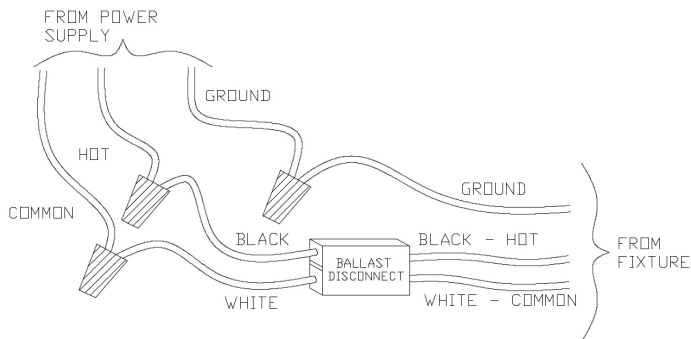
- Reflector
- Lamp (supplied or by others)
- Electrical Box (by others)
- Fasteners (by others)



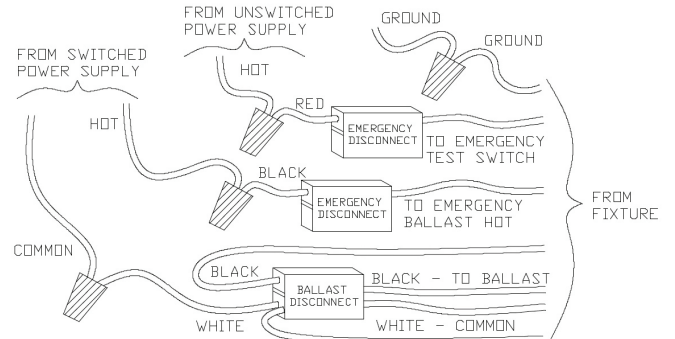
Important note: See wire entry and mounting stem location diagram at page 7 of this document.

WIRING DIAGRAMS

STANDARD WIRING

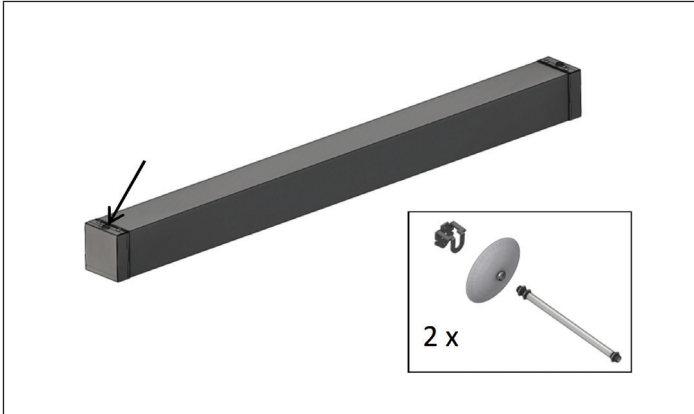


WITH OPTIONAL EMERGENCY PACK

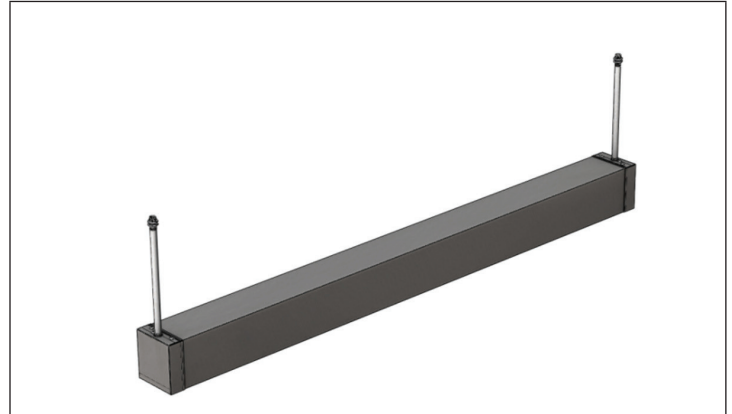


Specifications and design subject to change without notice.

STEP-BY-STEP INSTRUCTIONS



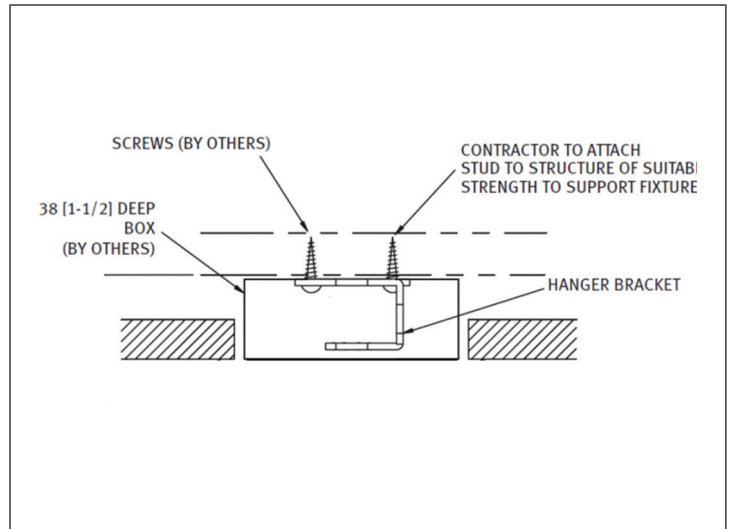
STEP 1. Remove fixture and stem kit packaging; note marked supply wires coming out at the top of the luminaire (one end only).



STEP 2. Route wires through one stem (E). Attach stems to threaded mounting brackets at the top of the luminaire enclosure (A) - one at each end.



STEP 3. Remove hex nuts (F) at the end of the stems, loosen set screw on the canopy slip ring and attach one canopy (G) to each stem. Re-attach hex nuts to the end of the stems; space nuts about 15mm apart.



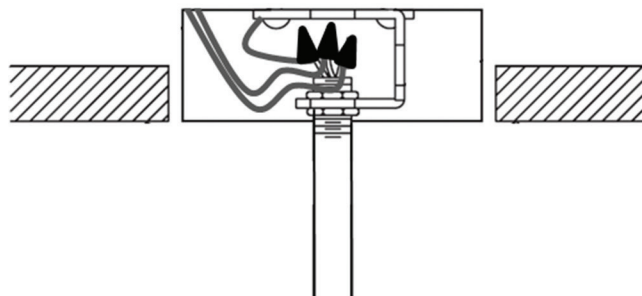
STEP 4. Attach both hanger brackets (H) to proper structure. One bracket needs to be attached inside electrical box with wires ready for electrical connections.

Specifications and design subject to change without notice.

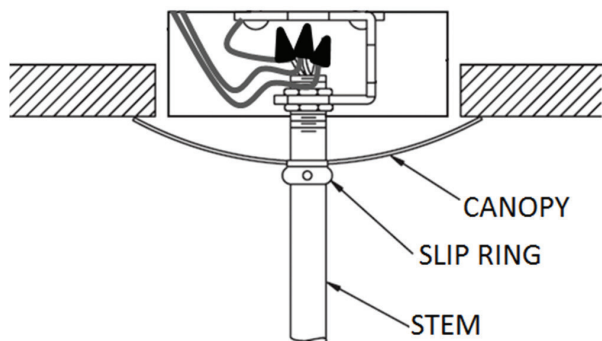
STEP-BY-STEP INSTRUCTIONS



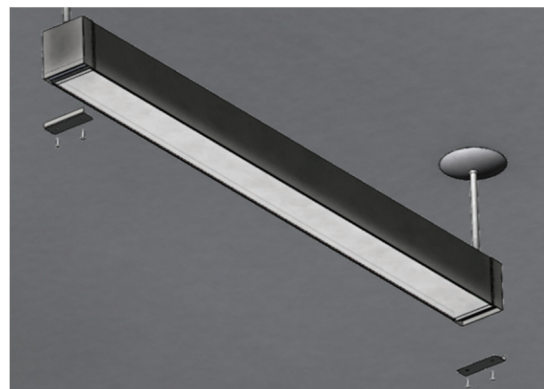
STEP 5. Attach both stems to hanger brackets.



STEP 6. Perform electrical wiring. Optional emergency ballast must be fed from the same branch circuit as the AC ballast.



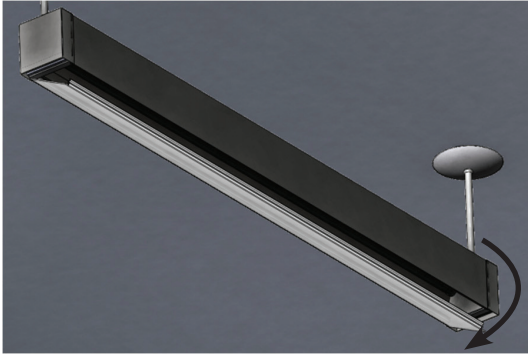
STEP 7. Adjust hex nuts and stems as needed to level fixture. Adjust and lock canopy in place by tightening the set screw on the canopy slip ring.



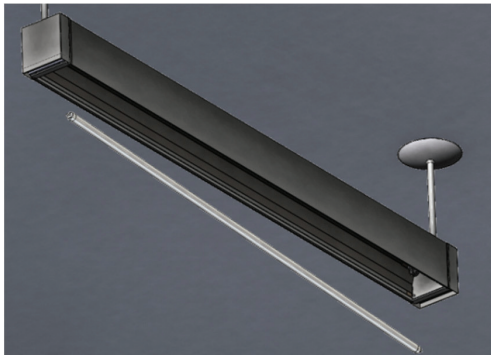
STEP 8. Remove end screws (D) and end plates (B). Keep all parts.

Specifications and design subject to change without notice.

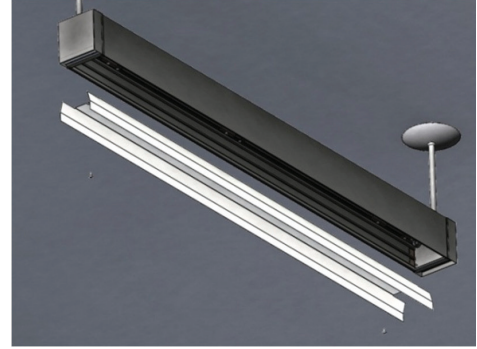
STEP-BY-STEP INSTRUCTIONS



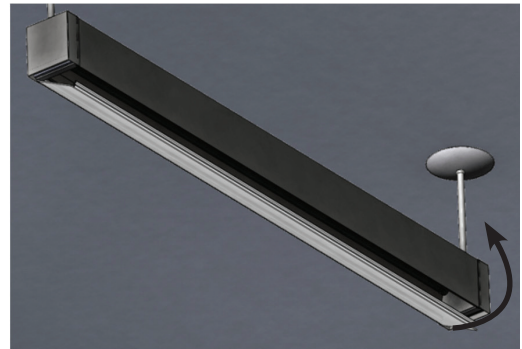
STEP 9. Remove lens (C) starting at one end. Pull one side first, rotate and detach. Keep lens.



STEP 11. Install lamp(s).



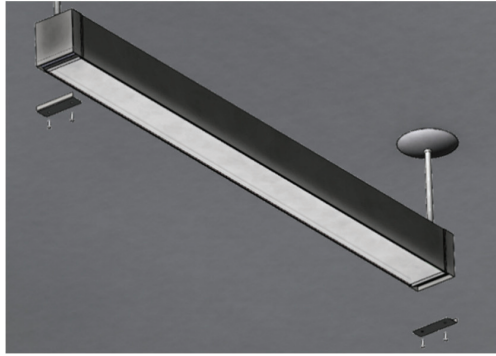
STEP 10. Perform this step only to gain access to fixture ballast: Remove reflector mounting screws and reflector. Note fixtures with optional emergency pack have a test switch and indicator light mounted on the reflector. Re-attach reflector with (2) mounting screws.



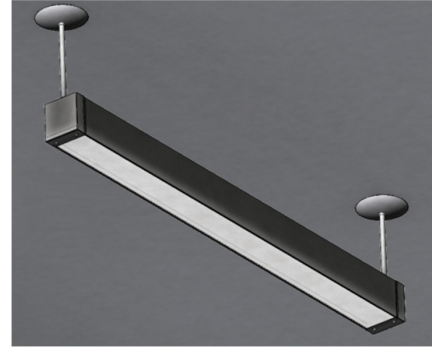
STEP 12. Re-attach lens. Start with one side first and close the other side starting from the corner. Make sure lens gaskets are in place and compressed between lens and fixture housing.

Specifications and design subject to change without notice.

STEP-BY-STEP INSTRUCTIONS



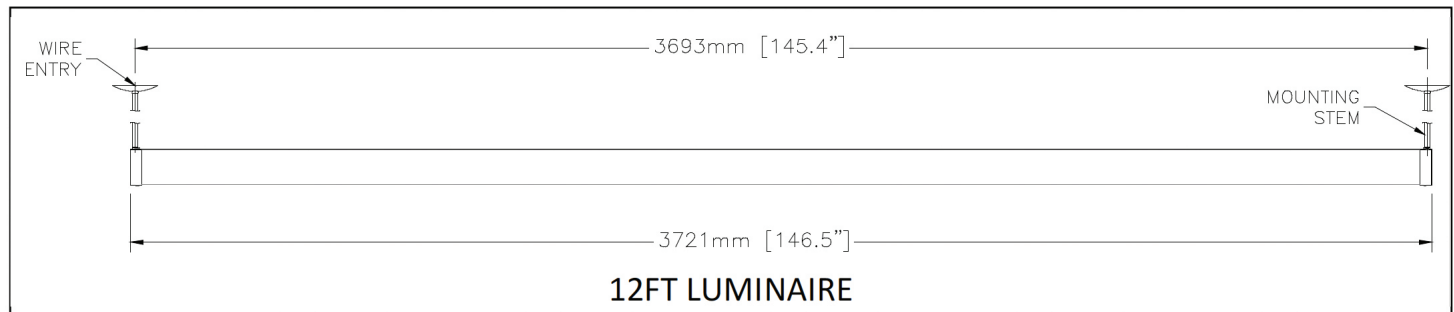
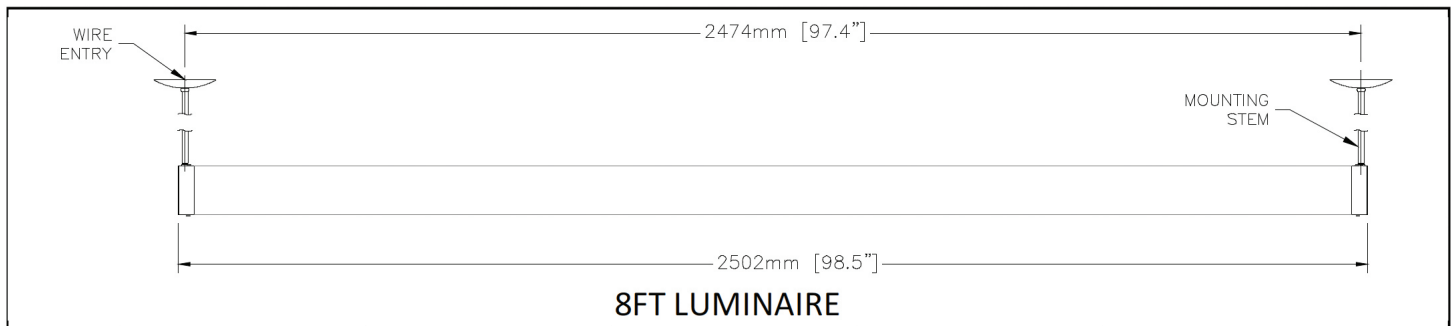
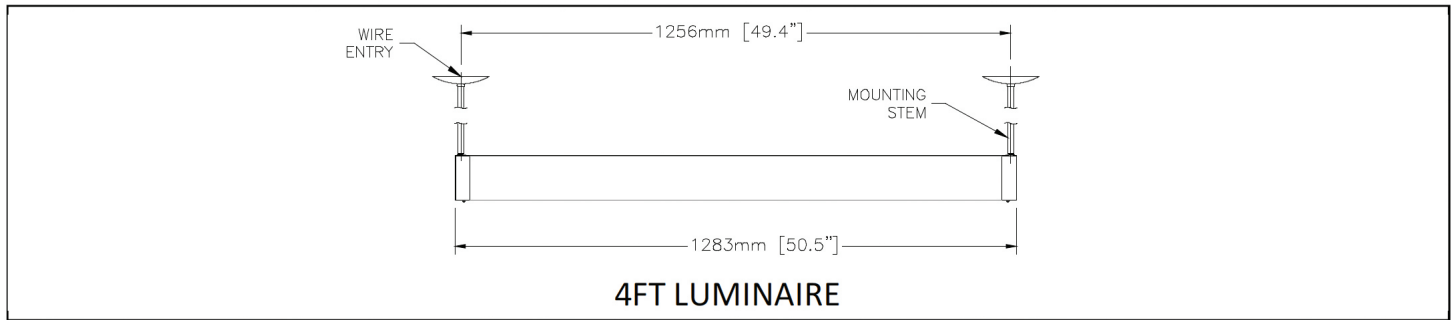
STEP 13. Re-attach end plates with (4) end screws.



STEP 14. Installed fixture.

Specifications and design subject to change without notice.

Wire entry and mounting stem location Diagram:



Specifications and design subject to change without notice.



NOTE: The following instructions provide general guidelines for product installation. For additional information consult the applicable electrical codes or contact factory directly for support before attempting anything with uncertainty.

CAUTION: Do not assemble fixture runs on floor.

WARNING: Risk of fire and electrical shock. **DISCONNECT POWER AT ELECTRICAL PANEL** before installing or servicing this product.

GENERAL SAFETY INSTRUCTIONS:

1. Read all instructions prior to installing this fixture.
2. This product must be installed in accordance with the applicable installation code by a person familiar with the construction and operation of the product and the hazards involved.
3. All wiring must be performed by a qualified electrician in accordance with national and local building and electrical codes.
4. This fixture must be suitably grounded for your protection against shock hazards and to assure proper operation.
5. Make sure that the power source conforms to the requirements of this fixture.

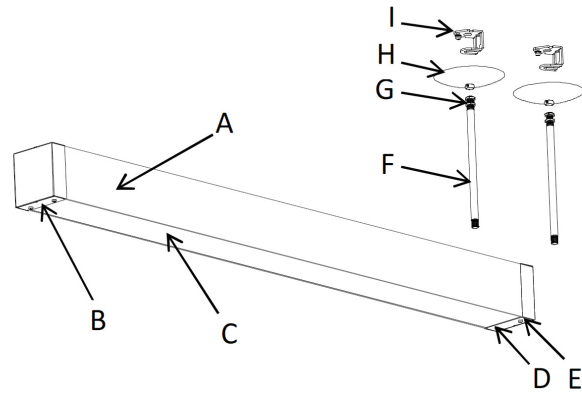
Specifications and design subject to change without notice.

PARTS LIST

MAIN PARTS LIST

- A. Luminaire Enclosure
- B. End Plate
- C. Lens
- D. End Screw
- E. Joiner Plate (Middle and Start Units Only)

- F. Stem
- G. Hex Nut
- H. Canopy
- I. Hanger Bracket



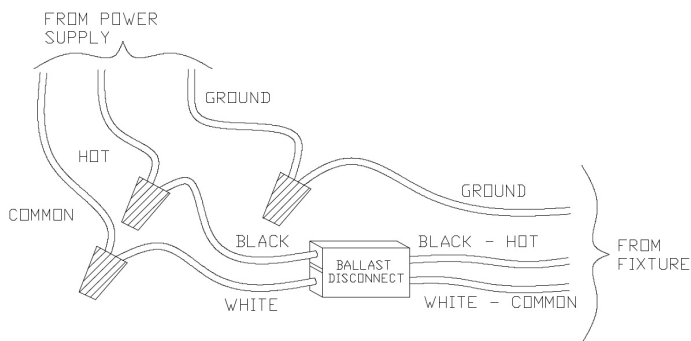
OTHER PARTS

- Reflector
- Lamp (supplied or by others)
- Electrical Box (by others)
- Fasteners (by others)

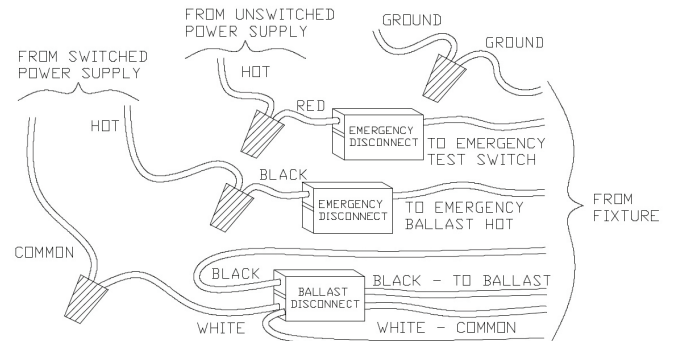
Important note: See wire entry and mounting stem location diagram at pages 6 and 7 of this document.

WIRING DIAGRAMS

STANDARD WIRING

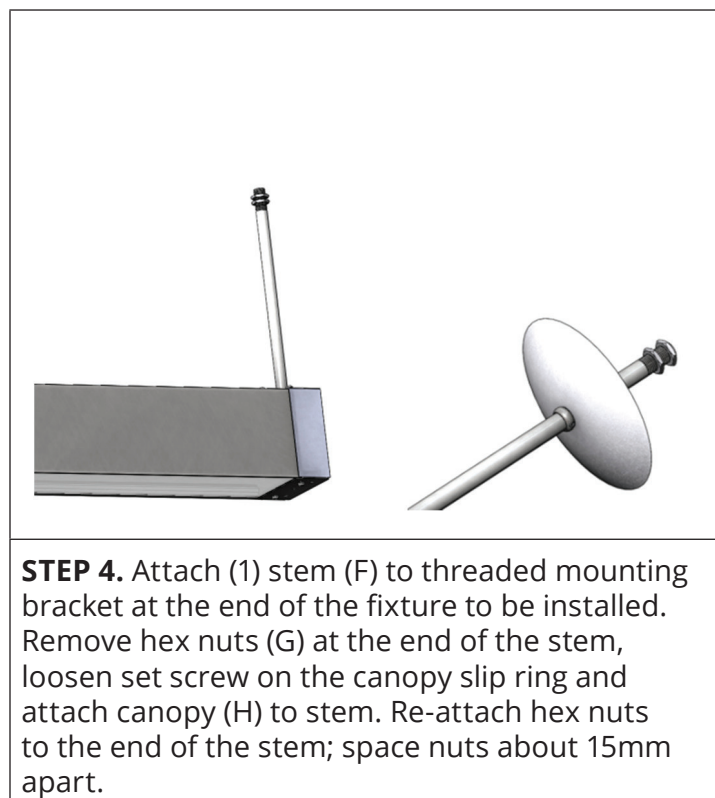
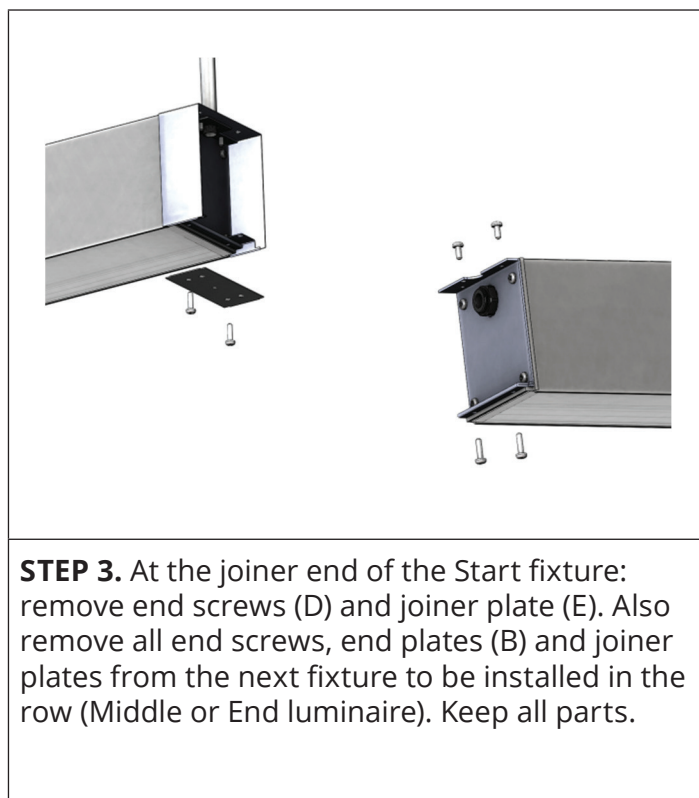
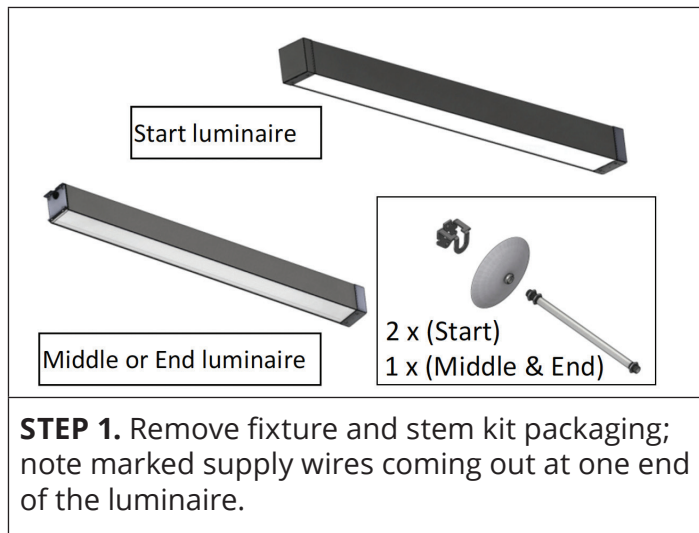


WITH OPTIONAL EMERGENCY PACK



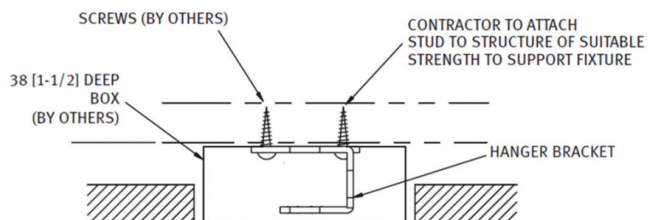
Specifications and design subject to change without notice.

STEP-BY-STEP INSTRUCTIONS



Specifications and design subject to change without notice.

STEP-BY-STEP INSTRUCTIONS



STEP 5. Attach hanger bracket (I) to proper structure.



STEP 6. Bring Middle or End fixture with the wire end close to the Start fixture joiner end. Route wires from Middle or End fixture through the stem and up into the junction box.



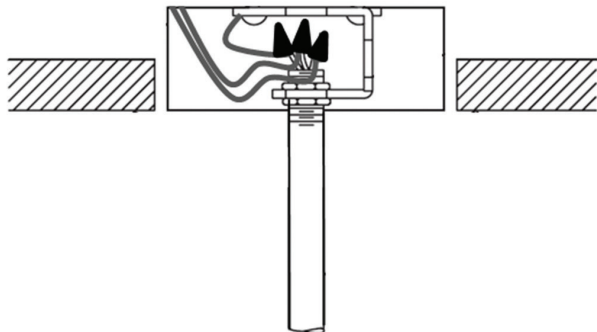
STEP 7. Attach Middle or End fixture to the Start fixture joiner end. Note that by loosening the stem bracket mounting screw at the top of the Start fixture the Middle or End fixture fits easier to the joiner piece. Do not remove the stem bracket mounting screw completely.



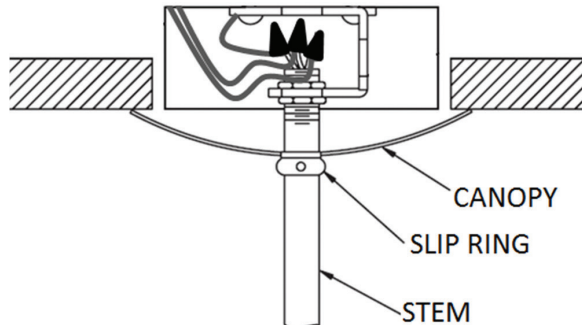
STEP 8. Attach stem to installed hanger bracket to support the other end of Middle or End fixture.

Specifications and design subject to change without notice.

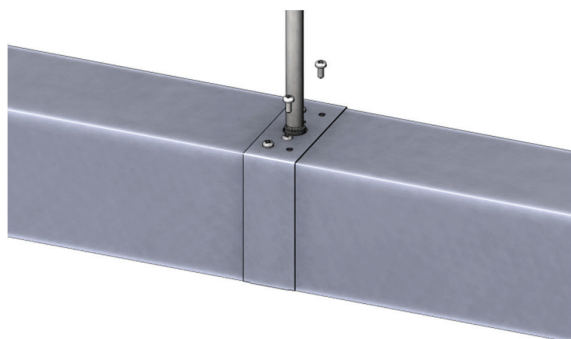
STEP-BY-STEP INSTRUCTIONS



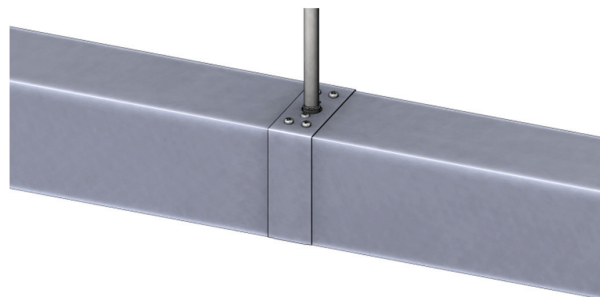
STEP 9. Perform electrical wiring. Optional emergency ballast must be fed from the same branch circuit as the AC ballast.



STEP 10. Adjust hex nuts and stems as needed to level fixtures. Lock canopy in place by tightening the set screw on the canopy slip ring.



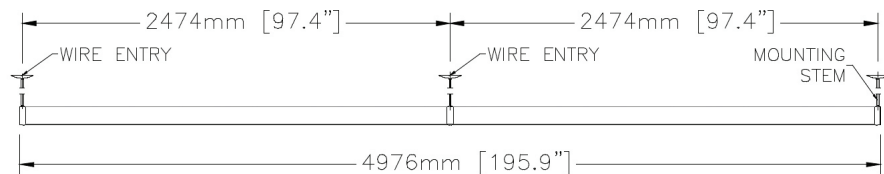
STEP 11. Re-attach (2) top end screws to Middle or End fixture. Tighten all screws.



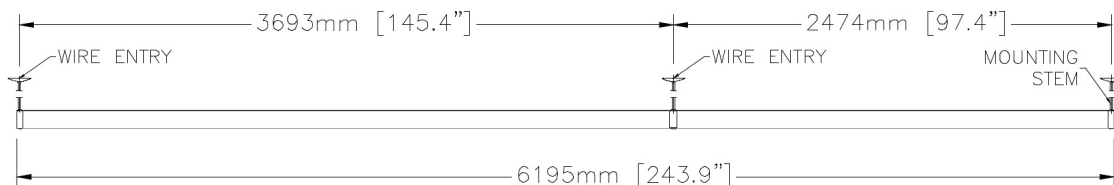
STEP 12. Joined luminaires. Complete remaining fixtures installation as needed. Refer to standard luminaire installation instructions for additional information.

Specifications and design subject to change without notice.

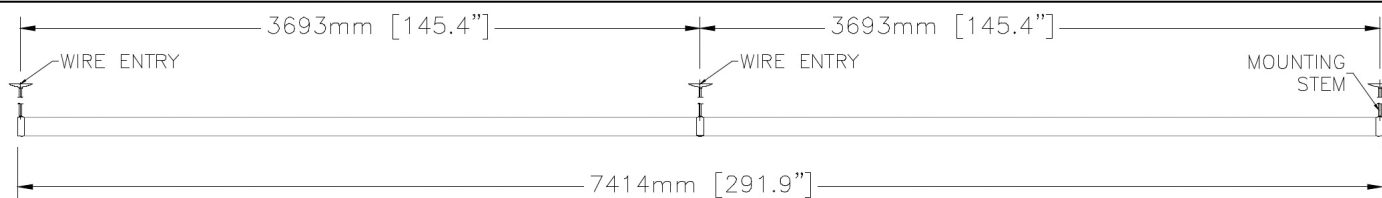
Wire entry and mounting stem location Diagram:



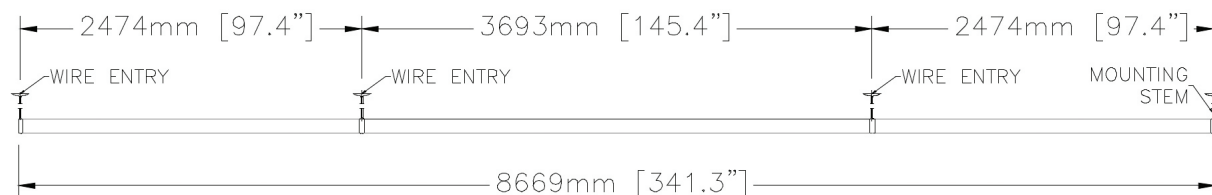
16FT RUN - JOIN (2) 8FT LUMINAIRES TOGETHER



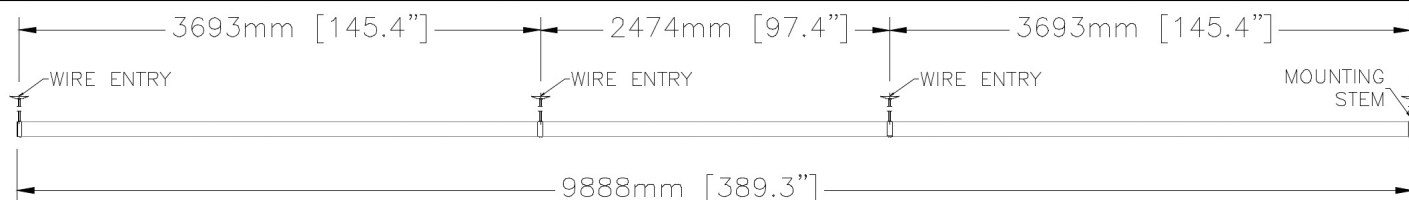
20FT RUN - JOIN (1) 12FT AND (1) 8FT LUMINAIRES TOGETHER



24FT RUN - JOIN (2) 12FT LUMINAIRES TOGETHER



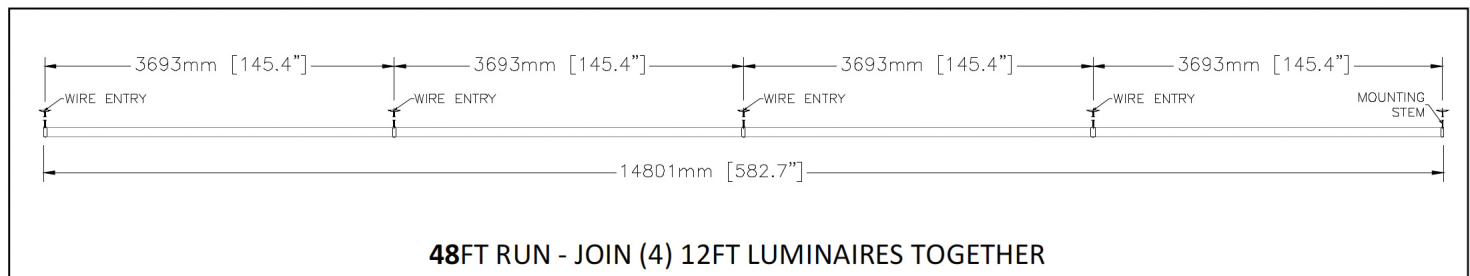
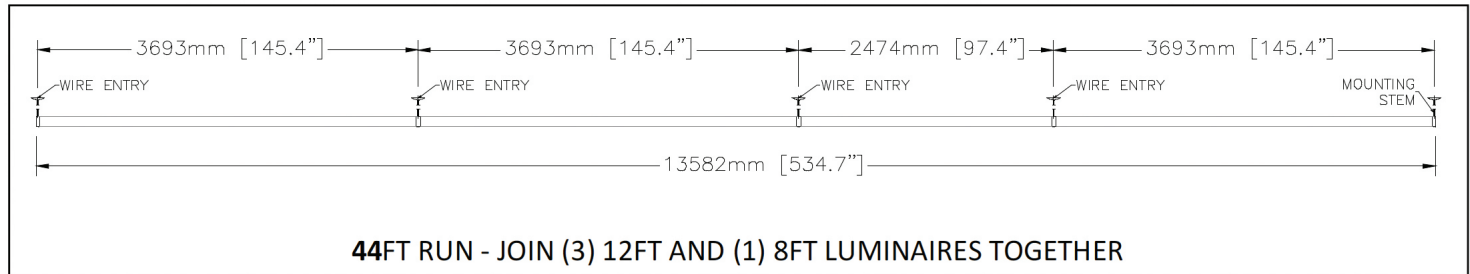
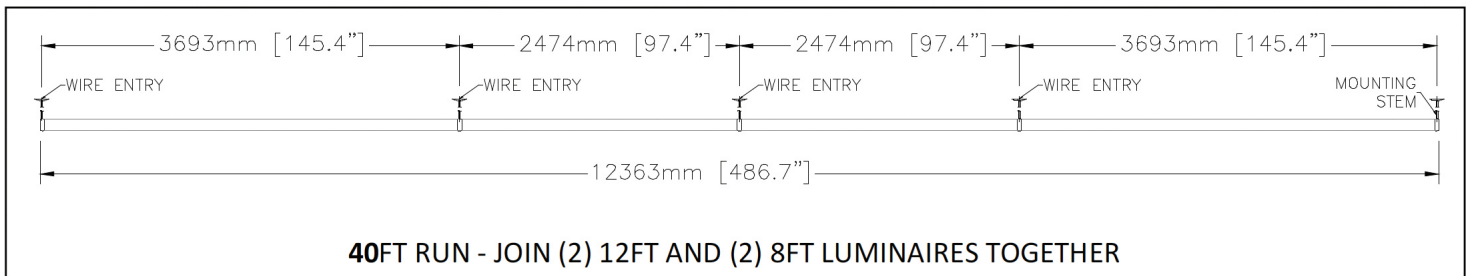
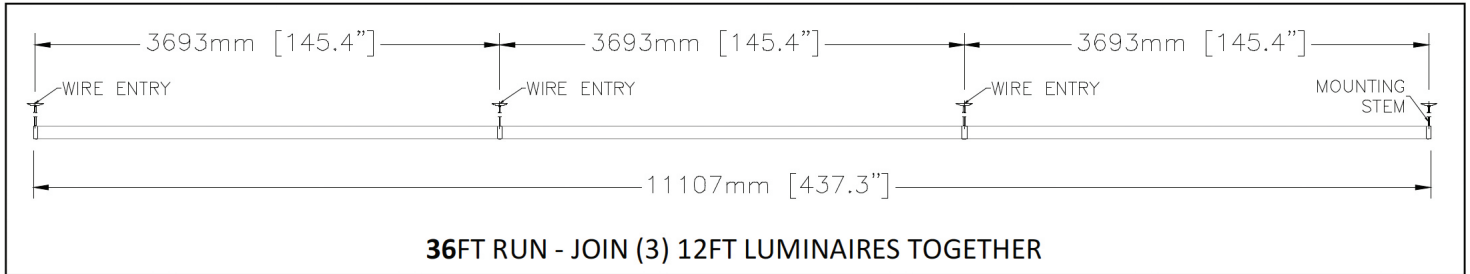
28FT RUN - JOIN (1) 12FT AND (2) 8FT LUMINAIRES TOGETHER



32FT RUN - JOIN (2) 12FT AND (1) 8FT LUMINAIRES TOGETHER

Specifications and design subject to change without notice.

Wire entry and mounting stem location Diagram:



Specifications and design subject to change without notice.