



NOTE: The following instructions provide general guidelines for product installation. For additional information consult the applicable electrical codes or contact factory directly for support before attempting anything with uncertainty.

CAUTION: Do not assemble fixture runs on floor.

WARNING: Risk of fire and electrical shock. **DISCONNECT POWER AT ELECTRICAL PANEL** before installing or servicing this product.

GENERAL SAFETY INSTRUCTIONS:

1. Read all instructions prior to installing this fixture.
2. This product must be installed in accordance with the applicable installation code by a person familiar with the construction and operation of the product and the hazards involved.
3. All wiring must be performed by a qualified electrician in accordance with national and local building and electrical codes.
4. This fixture must be suitably grounded for your protection against shock hazards and to assure proper operation.
5. Make sure that the power source conforms to the requirements of this fixture.

Specifications and design subject to change without notice.

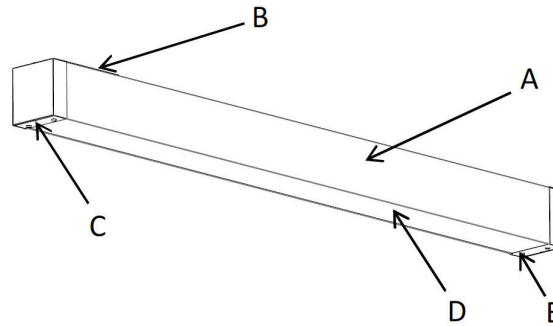
PARTS LIST

MAIN PARTS LIST

- A. Luminaire Enclosure
- B. Top Gasket
- C. End Plate
- D. Lens
- E. End Screw

OTHER PARTS

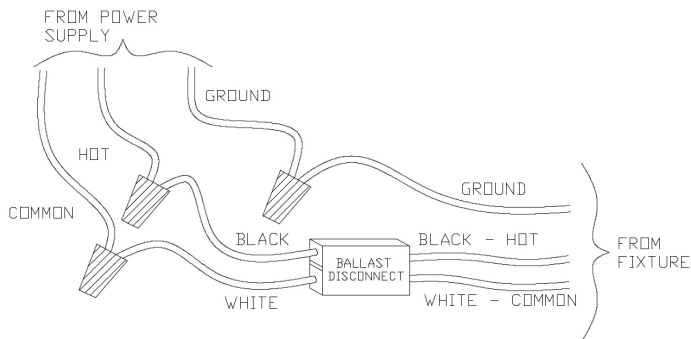
- Reflector
- Lamp (supplied or by others)
- Electrical Switch Box (by others)
- Fasteners (by others)



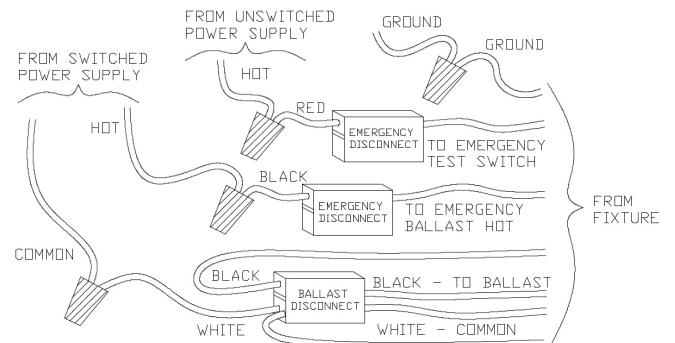
Important note: See wire entry and mounting holes location diagram at page 6 of this document.

WIRING DIAGRAMS

STANDARD WIRING

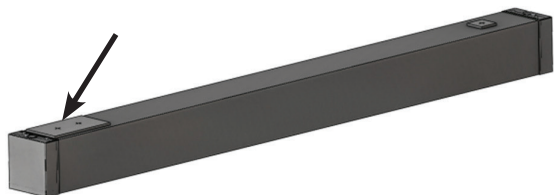


WITH OPTIONAL EMERGENCY PACK

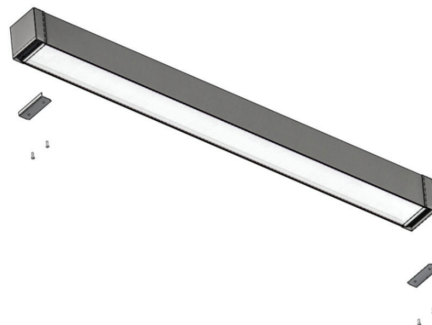


Specifications and design subject to change without notice.

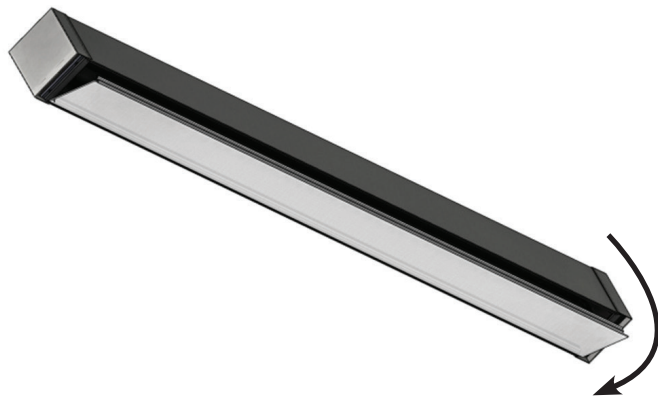
STEP-BY-STEP INSTRUCTIONS



STEP 1. Remove fixture packaging; note marked supply wires coming out at the top of the luminaire.



STEP 2. Remove end screws (E) and end plates (C). Keep all parts.



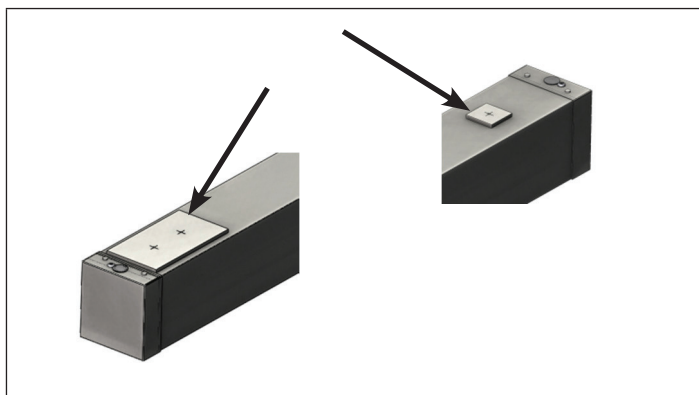
STEP 3. Remove lens (D) starting at one end. Pull one side first, rotate and detach. Keep lens.



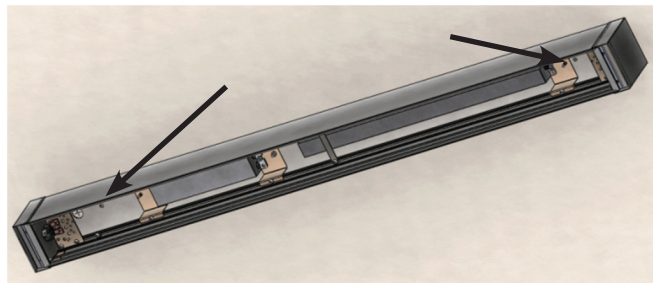
STEP 4. Remove reflector mounting screws and reflector. Note fixtures with optional emergency pack have a test switch and indicator light mounted on the reflector.

Specifications and design subject to change without notice.

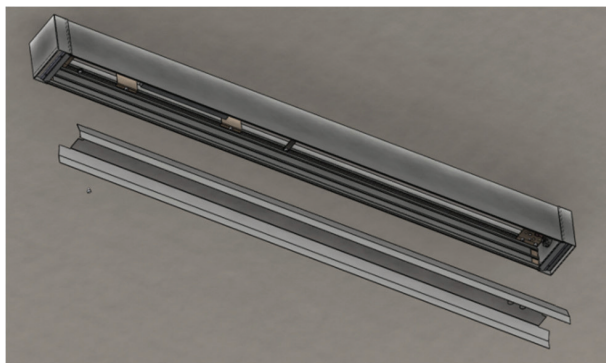
STEP-BY-STEP INSTRUCTIONS



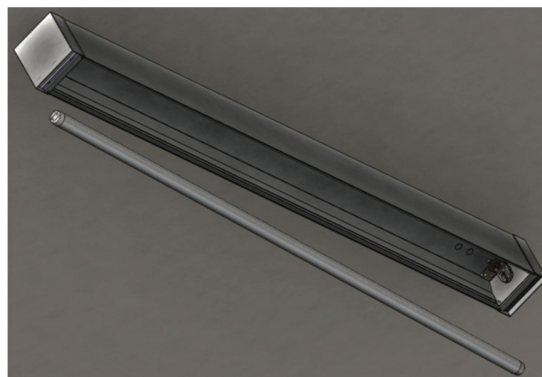
STEP 5. If mounting surface is uneven, apply silicone caulking on the perimeter of all top mounting gaskets (B) to ensure proper water tightness around wire entry and mounting holes.



STEP 6. Perform electrical wiring. Install and secure fixture to mounting surface (fasteners by others). Make sure electrical switch box is completely covered by fixture top gasket. Optional emergency ballast must be fed from the same branch circuit as the AC ballast.



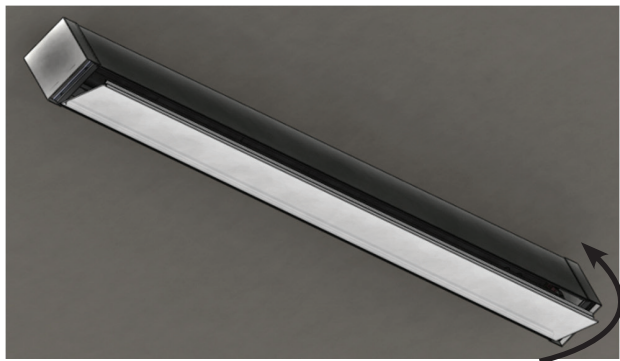
STEP 7. Re-attach reflector with (2) mounting screws.



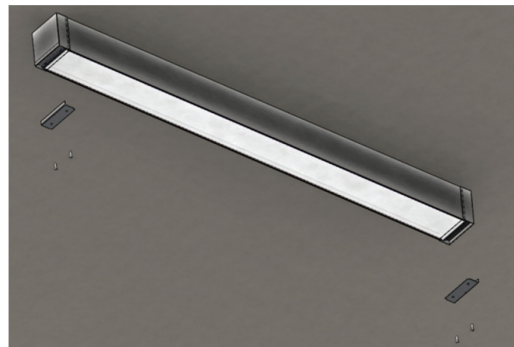
STEP 8. Install lamp(s).

Specifications and design subject to change without notice.

STEP-BY-STEP INSTRUCTIONS



STEP 9. Re-attach lens. Start with one side first and close the other side starting from the corner. Make sure lens gaskets are in place and compressed between lens and fixture housing.



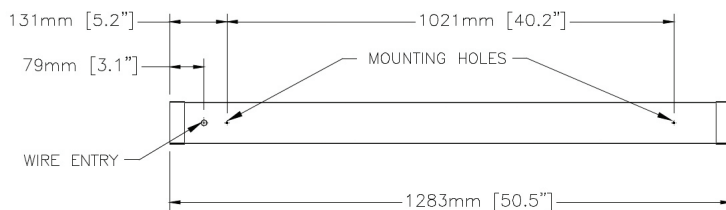
STEP 10. Re-attach end plates with (4) end screws.



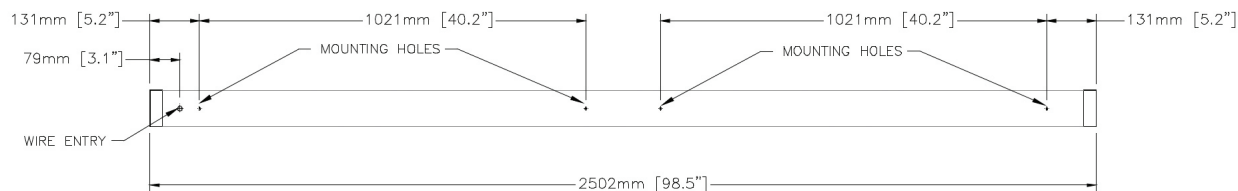
STEP 11. Installed fixture.

Specifications and design subject to change without notice.

Wire entry and mounting holes location Diagram



4FT LUMINAIRE



8FT LUMINAIRE



12FT LUMINAIRE

Specifications and design subject to change without notice.



NOTE: The following instructions provide general guidelines for product installation. For additional information consult the applicable electrical codes or contact factory directly for support before attempting anything with uncertainty.

CAUTION: Do not assemble fixture runs on floor.

WARNING: Risk of fire and electrical shock. **DISCONNECT POWER AT ELECTRICAL PANEL** before installing or servicing this product.

GENERAL SAFETY INSTRUCTIONS:

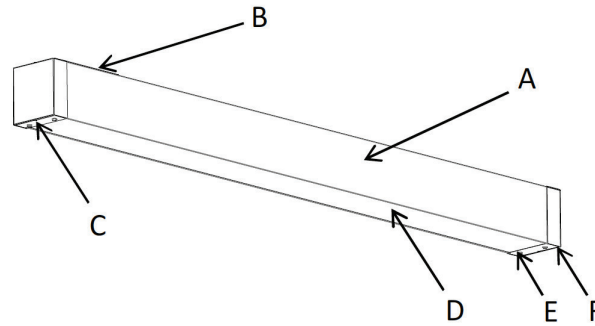
1. Read all instructions prior to installing this fixture.
2. This product must be installed in accordance with the applicable installation code by a person familiar with the construction and operation of the product and the hazards involved.
3. All wiring must be performed by a qualified electrician in accordance with national and local building and electrical codes.
4. This fixture must be suitably grounded for your protection against shock hazards and to assure proper operation.
5. Make sure that the power source conforms to the requirements of this fixture.

Specifications and design subject to change without notice.

PARTS LIST

MAIN PARTS LIST

- A. Luminaire Enclosure
- B. Top Gasket
- C. End Plate
- D. Lens
- E. End Screw
- F. Joiner Plate (Middle and Start Units Only)



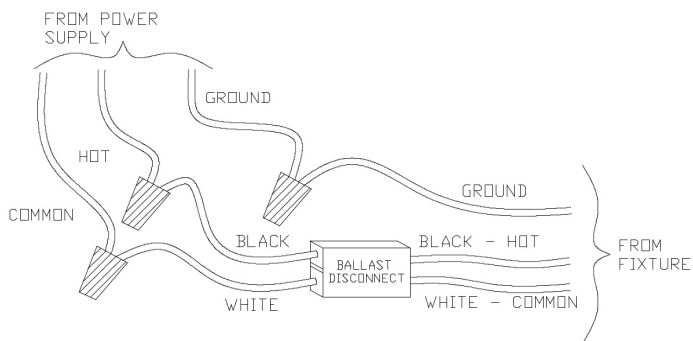
OTHER PARTS

- Reflector
- Lamp (supplied or by others)
- Electrical Switch Box (by others)
- Fasteners (by others)

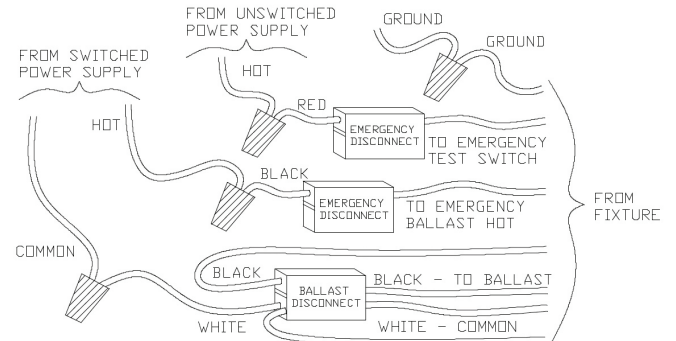
Important note: See mounting holes and wire entry location diagrams at pages 6 and 7 of this document.

WIRING DIAGRAMS

STANDARD WIRING

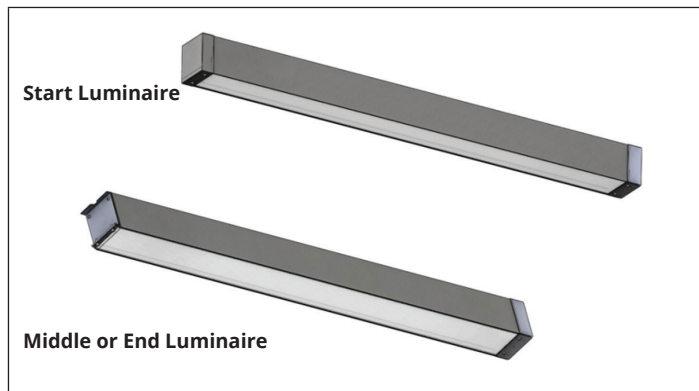


WITH OPTIONAL EMERGENCY PACK

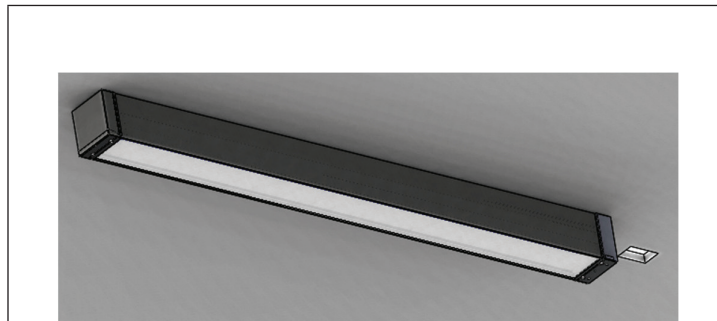


Specifications and design subject to change without notice.

STEP-BY-STEP INSTRUCTIONS



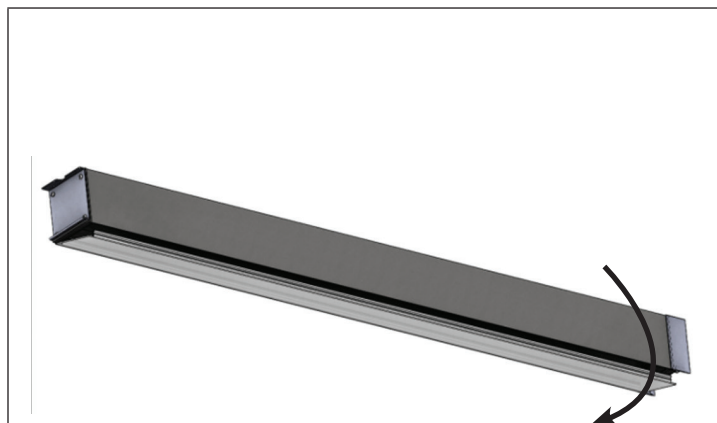
STEP 1. Remove fixture packaging; note marked supply wires coming out at the top of the luminaire.



STEP 2. Install Start luminaire following standard installation instructions. Do not apply power to the fixture.



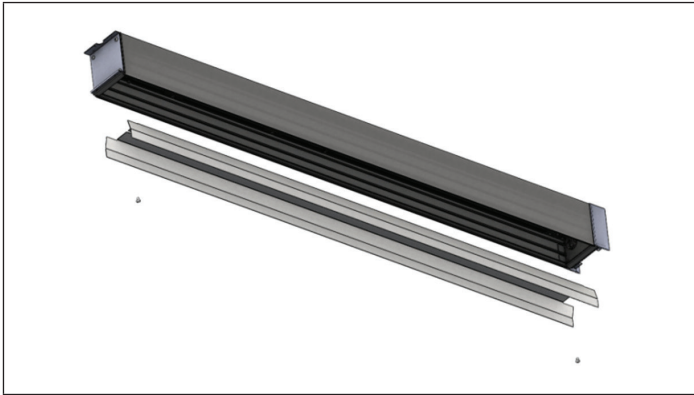
STEP 3. At the joiner end of the Start fixture: remove end screws (E) and joiner plate (F). Also remove all end screws, end plates (C) and joiner plates from the next fixture to be installed in the row (Middle or End luminaire). Keep all parts.



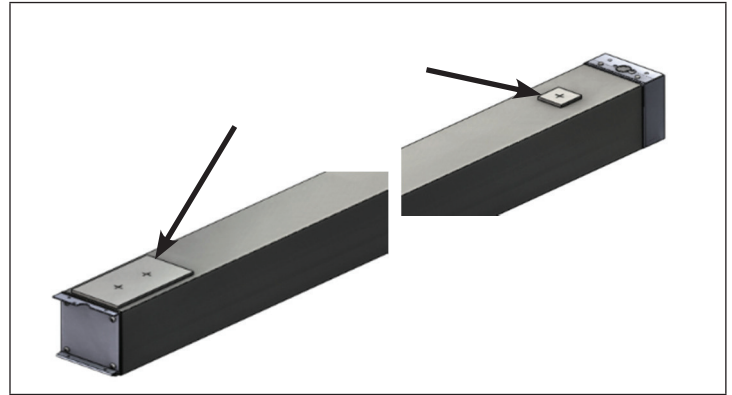
STEP 4. Remove lens (D) from Middle or End luminaire. Starting at one end; pull one side first, rotate and detach. Keep lens.

Specifications and design subject to change without notice.

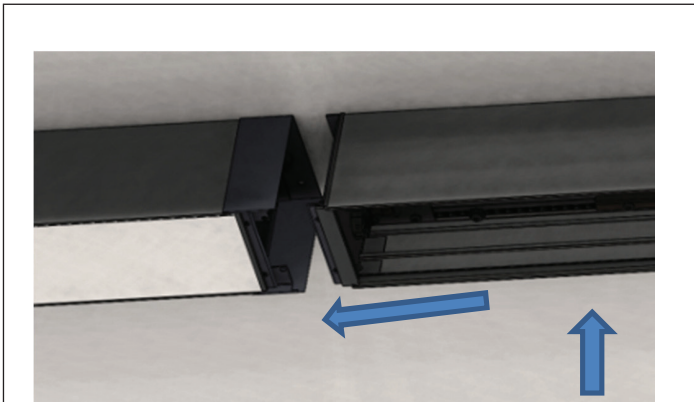
STEP-BY-STEP INSTRUCTIONS



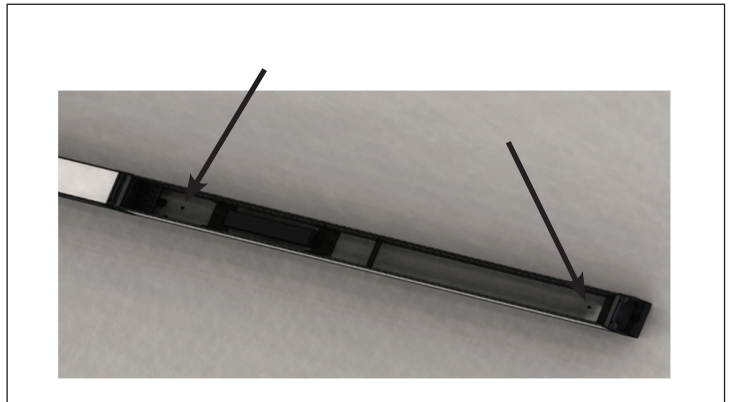
STEP 5. Remove reflector mounting screws and reflector. Note fixtures with optional emergency pack have a test switch and indicator light mounted on the reflector.



STEP 6. If mounting surface is uneven, apply silicone caulking on the perimeter of top mounting gaskets (B) to ensure proper water tightness around wire entry and mounting holes.



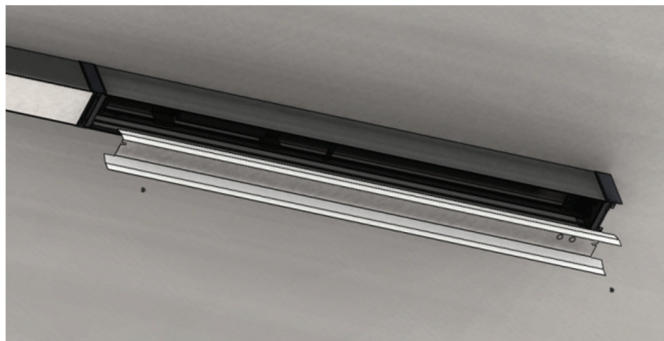
STEP 7. Perform electrical wiring at the switch box. Bring fixture with the wire entry end close to the Start fixture joiner end. Attach Middle or End fixture to the Start fixture joiner end.



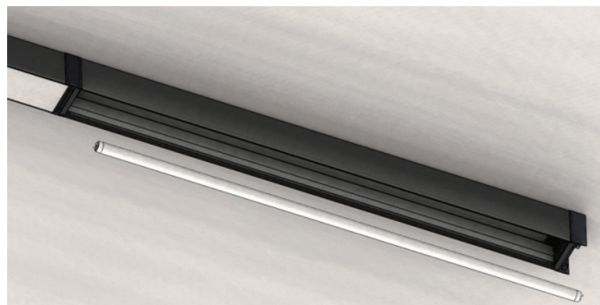
STEP 8. Install and secure fixture to the mounting surface (fasteners by others). Make sure electrical switch box is completely covered by fixture top gasket.

Specifications and design subject to change without notice.

STEP-BY-STEP INSTRUCTIONS



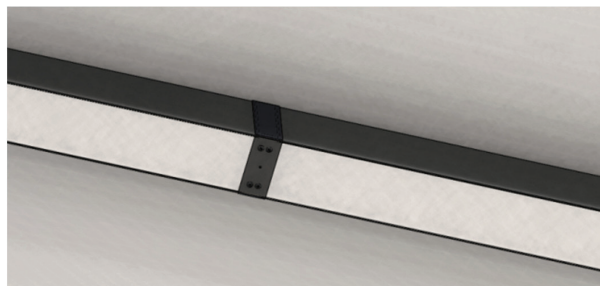
STEP 9. Re-attach reflector with (2) mounting screws.



STEP 10. Install lamp(s).



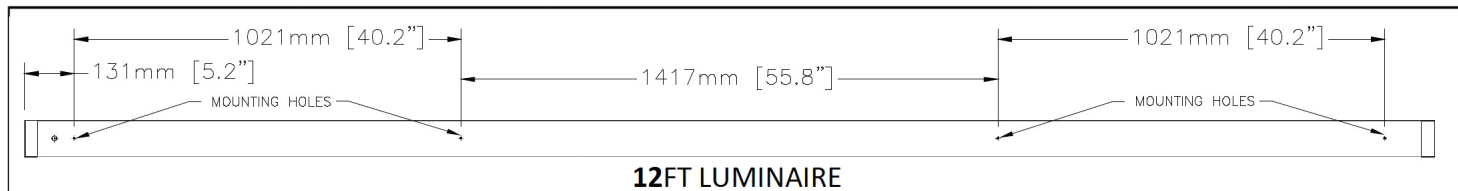
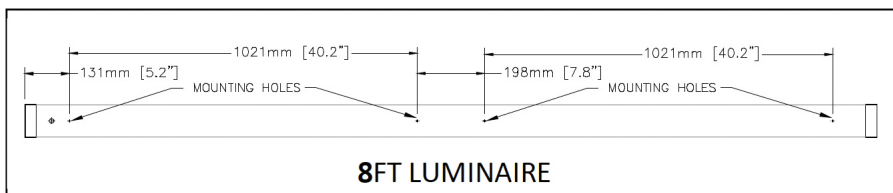
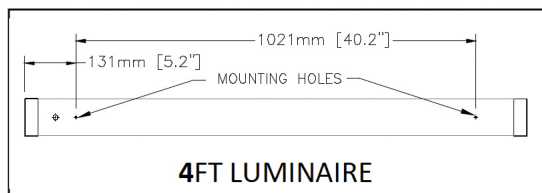
STEP 11. Re-attach lens. Start with one side first and close the other side starting from the corner. Make sure lens gaskets are in place and compressed between lens and fixture housing.



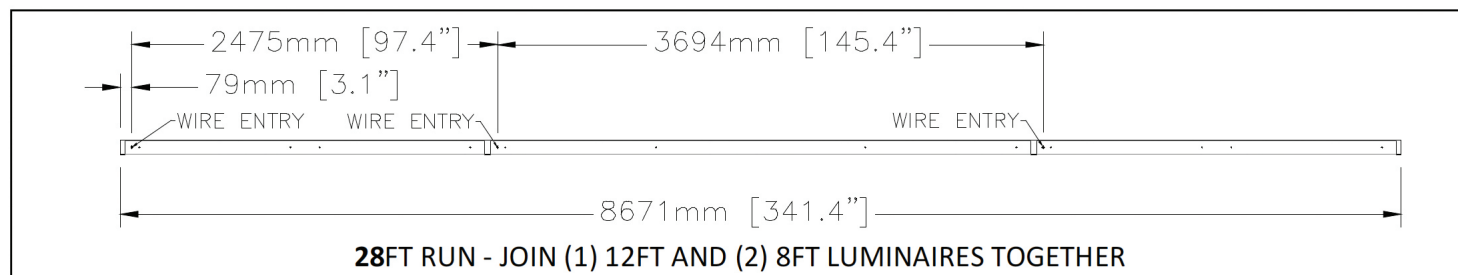
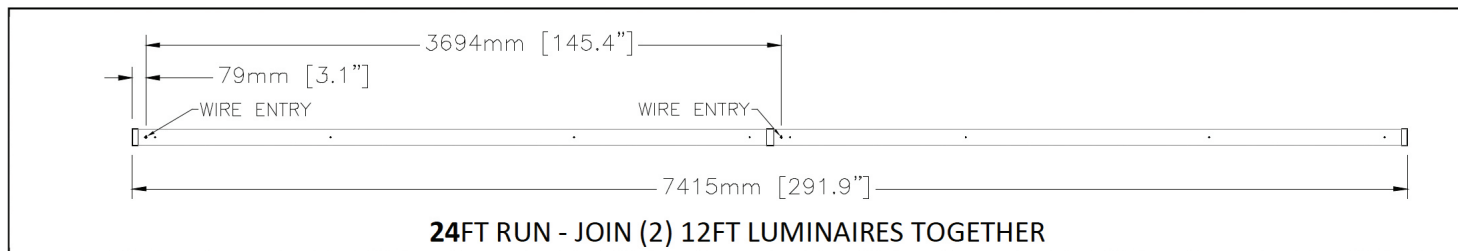
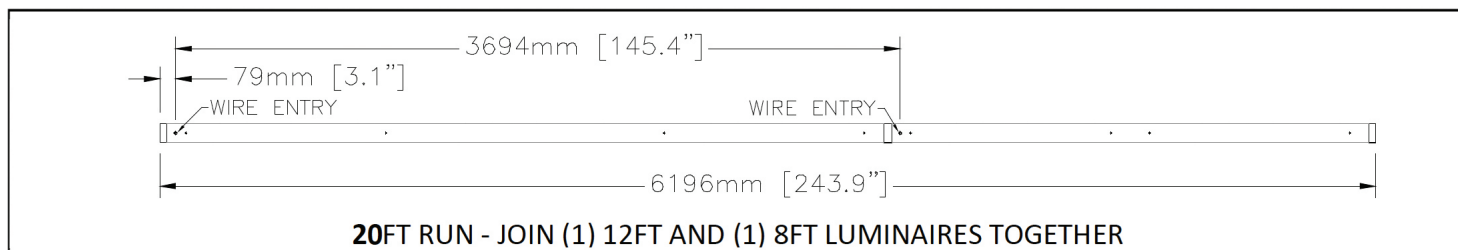
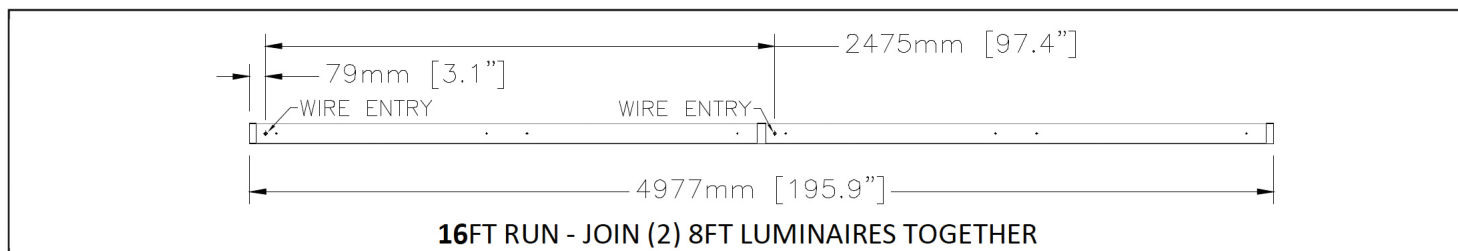
STEP 12. Joined luminaires. Complete remaining fixtures installation as needed.

Specifications and design subject to change without notice.

Mounting holes location Diagram:

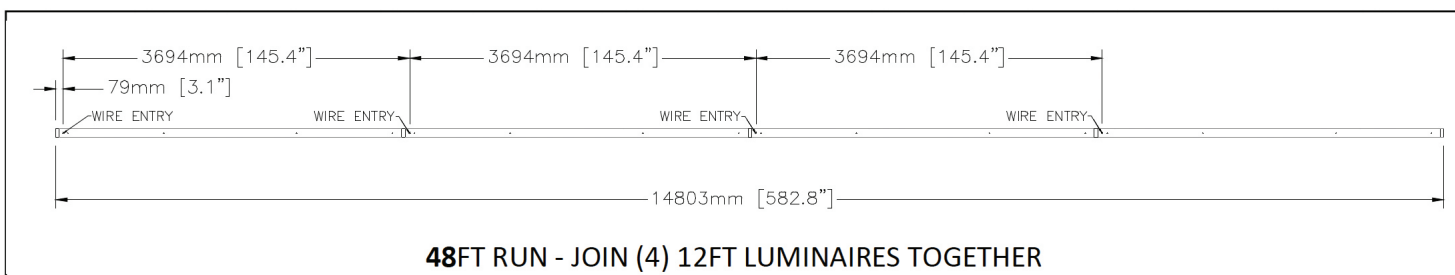
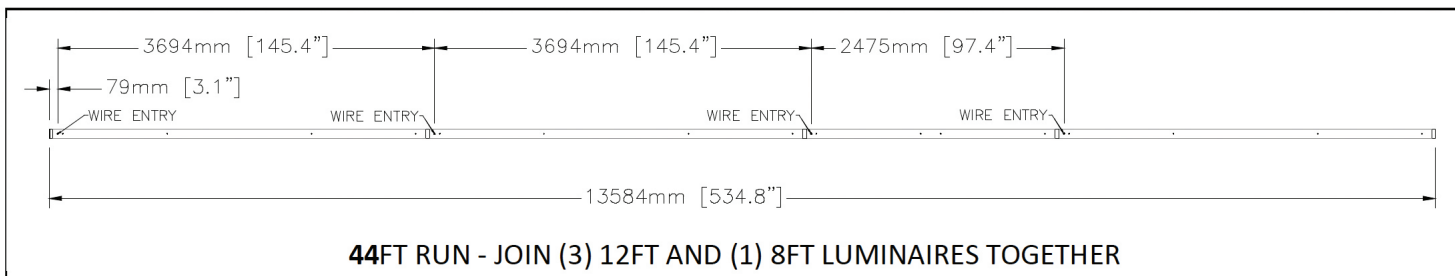
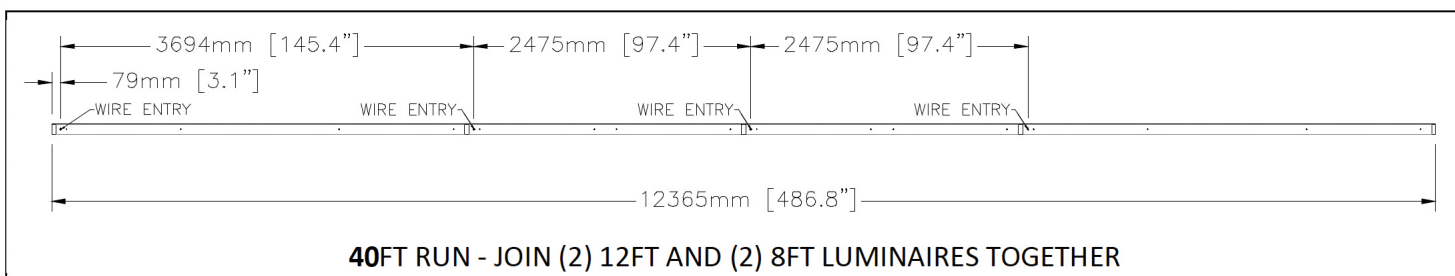
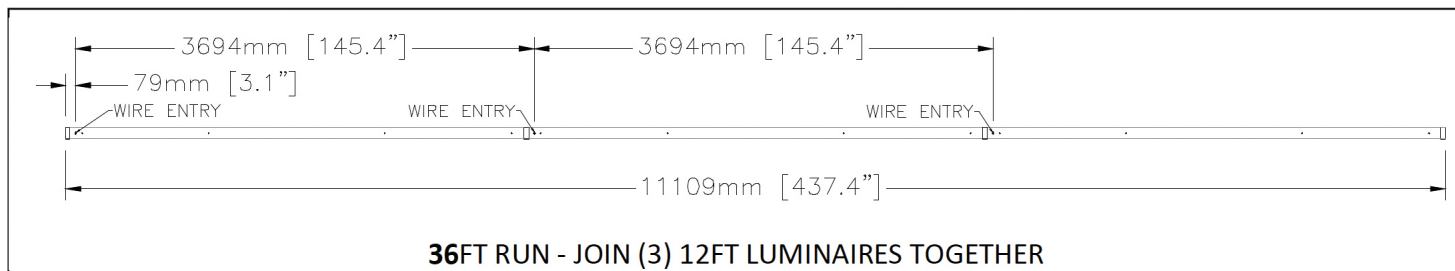
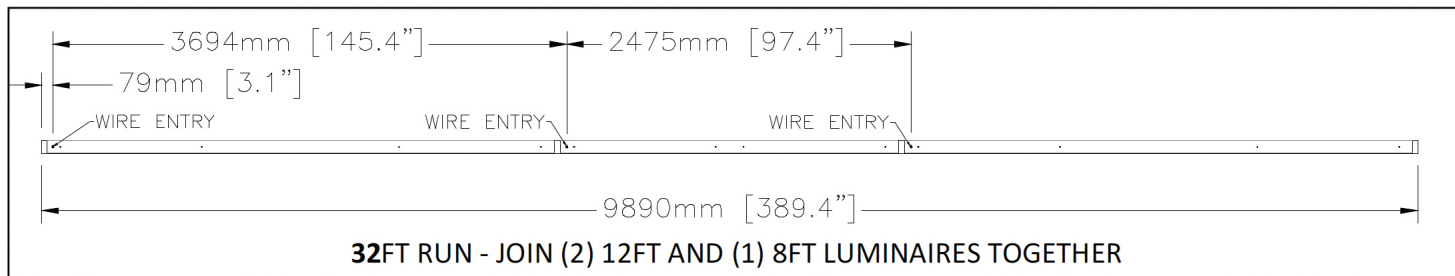


Wire entry location Diagram:



Specifications and design subject to change without notice.

Wire entry location Diagram:



Specifications and design subject to change without notice.