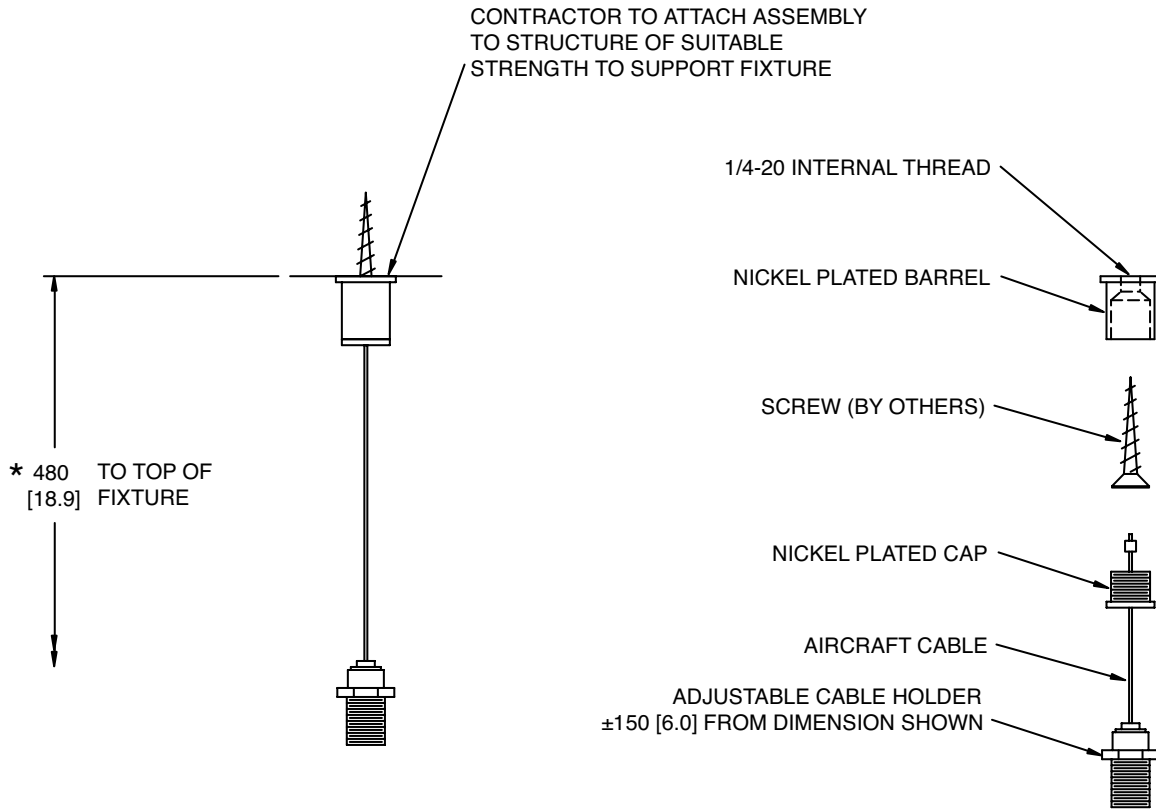


Mounting Options

SPECIAL APPLICATIONS

TO-M4-06

Aircraft Cable Surface Mount



Site installation must comply with national and local building and electrical codes.

Notes

Mounting height

\* Standard mounting height as shown above.  
If a different height is required please indicate below

special height \_\_\_\_\_

All dimensions are nominal and subject to tolerances. We reserve the right to make changes that will not alter installed appearance, function, or performance. These designs remain the property of Metalumen. We reserve the exclusive right to reproduce them and to manufacture the items illustrated herein. Some combinations may not be available, consult factory. Metalumen™ is a registered trade mark. © 2006 Metalumen Manufacturing Inc.

Approvals

R2-05-06



570 Southgate Drive, Guelph, Ontario N1H 4P6  
Mailing Address: P.O. Box 1779 Guelph, Ontario, N1H 6Z9  
T: 800.621.6785 T: 519.822.4381 F: 519.822.4589  
www.metalumen.com

\_\_\_\_\_  
Signature

\_\_\_\_\_  
Date