

NOTE: The following instructions provide general guidelines for product installation. For additional information consult the applicable electrical codes or contact factory directly for support before attempting anything with uncertainty.

CAUTION: Do not assemble fixture runs on floor.

WARNING: Risk of fire and electrical shock. **DISCONNECT POWER AT ELECTRICAL PANEL** before installing or servicing this product.

GENERAL SAFETY INSTRUCTIONS:

1. Read all instructions prior to installing this fixture.
2. This product must be installed in accordance with the applicable installation code by a person familiar with the construction and operation of the product and the hazards involved.
3. All wiring must be performed by a qualified electrician in accordance with national and local building and electrical codes.
4. This fixture must be suitably grounded for your protection against shock hazards and to assure proper operation.
5. Make sure that the power source conforms to the requirements of this fixture.

Specifications and design subject to change without notice.

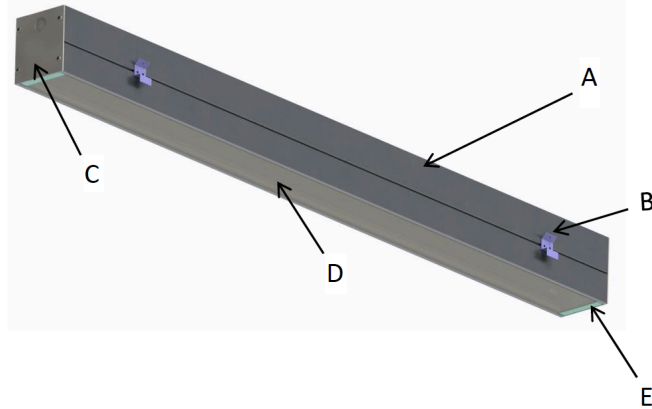
PARTS LIST

MAIN PARTS

- A. Luminaire Enclosure
- B. Retainer Clip
- C. End Plate
- D. Lens
- E. Lens Filler

OTHER PARTS

- Reflector/LED assembly



REQUIRED TOOLS

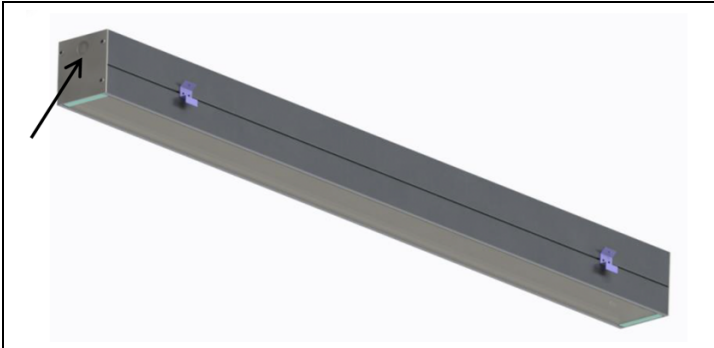
DRILL	#8 PHILLIPS BIT	#8 PHILLIPS SCREWDRIVER	PLASTIC / LATEX GLOVES

WIRING DIAGRAMS

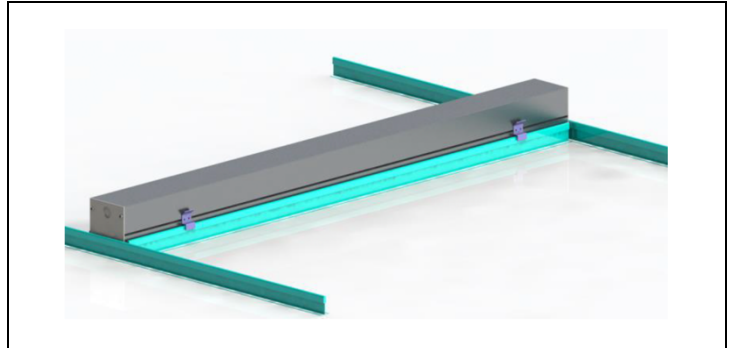
STANDARD	EMERGENCY / NIGHT LIGHT	EMERGENCY BATTERY PACK
<ul style="list-style-type: none"> BLACK - LINE WHITE - NEUTRAL GREEN - GROUND RED - CAPPED/SW LEAD VIOLET - DIM(+) PINK - DIM(-) 	<ul style="list-style-type: none"> BLACK - LINE WHITE - NEUTRAL GREEN - GROUND RED - CAP OFF 	<ul style="list-style-type: none"> BLACK - LINE WHITE - NEUTRAL GREEN - GROUND RED - UNSWITCHED HOT

Specifications and design subject to change without notice.

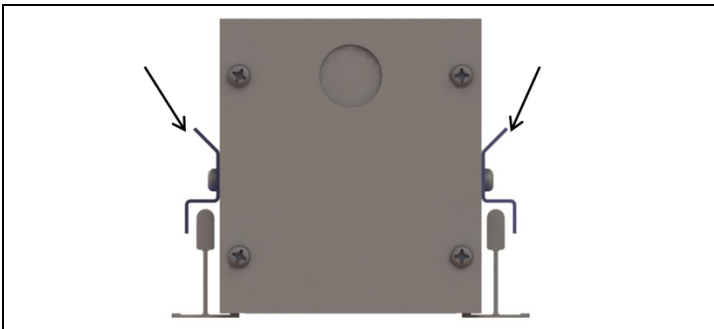
STEP-BY-STEP INSTRUCTIONS



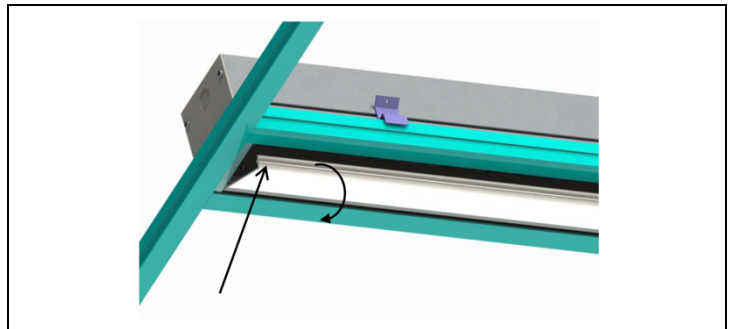
STEP 1. Remove fixture packaging; note marked supply wires coming out at one end of the luminaire.



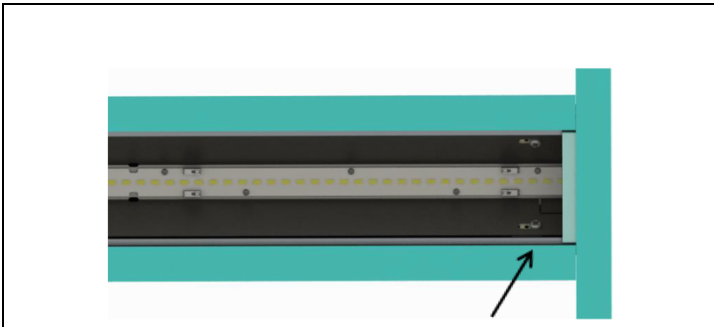
STEP 2. Place luminaire fixture (A) into ceiling and rest on T-Bar



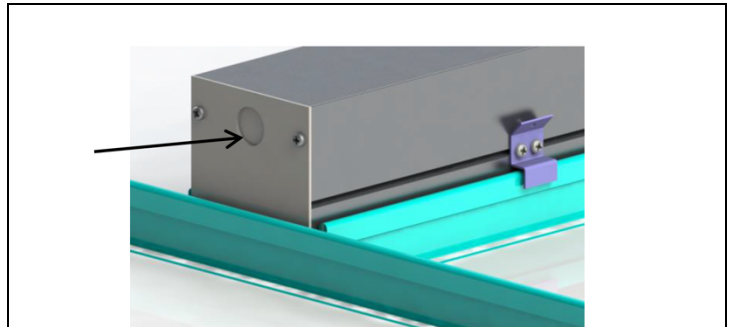
STEP 3. Ensure retainer clips (B) are positioned as pictured above and securely fastened.



STEP 4. Remove lens (D) starting at one end. Pull one side first, rotate and detach. Keep lens.

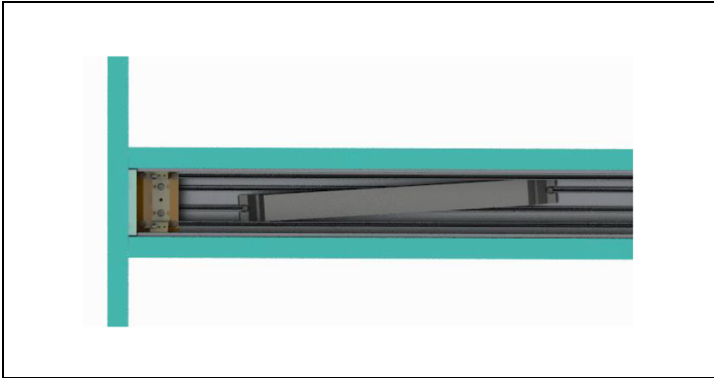


STEP 5. Remove reflector mounting screws (4 per reflector) and reflector/LED assembly. Note that fixtures with an optional emergency pack may have a test switch and indicator light mounted on the reflector.



STEP 6. Bring electrical supply to the fixture as needed.

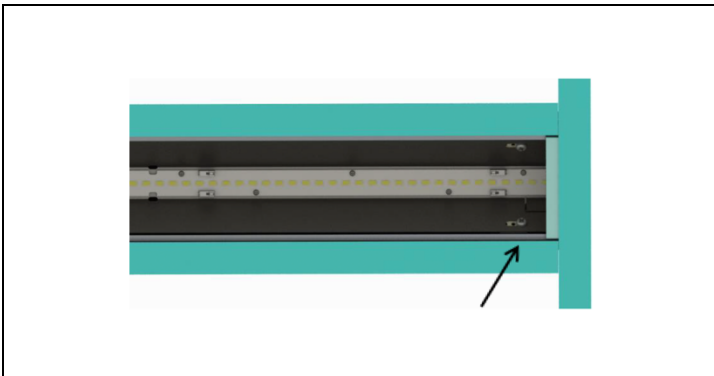
Specifications and design subject to change without notice.



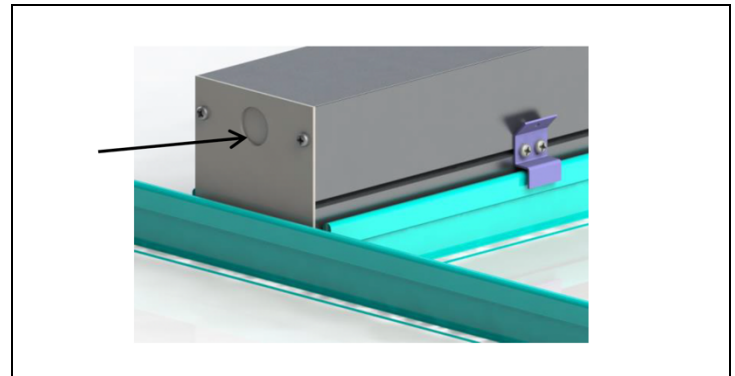
STEP 7. Perform electrical wiring inside the fixture. Optional emergency driver must be fed from the same branch circuit as the AC driver.



STEP 8. Place the reflector assembly back into the fixture and fasten with the same 4 screws taken out. Repeat for each reflector assembly to be reinstalled.



STEP 9. Re-attach lens. (D) Start with one entire side fitted in first and close the other side starting from one corner working down the length of the lens.



STEP 10. Installed fixture (A).

Specifications and design subject to change without notice.