

RAIL 4 RM4TZ

TECHZONE . RECESSED T-BAR . DIRECT



- Suitable for 15/16" TechZone Ceiling System
- Constructed from powder-coated recycled aluminum extrusion with a PMMA extruded optics system
- Option for daylight harvesting, occupancy sensing, dimming control and emergency lighting

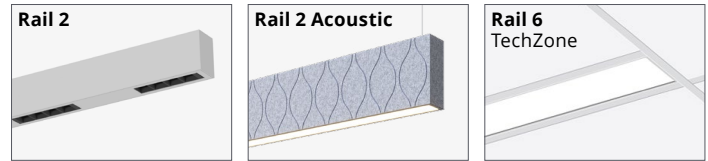


PART #:	
PREP BY:	DATE:
PROJECT:	QTY:
NOTES:	
APPROVAL SIGNATURE:	DATE (DD/MM/YYYY):

PERFORMANCE SUMMARY		Meta Blanc
Light Level		60
Lumens per foot	80 CRI	485
	90 CRI	425
Wattage per foot		5.7
Efficacy	80 CRI	85.1
	90 CRI	74.6
L70 Estimate (h)		≥ 60,000 hrs

See page 2 for the complete Light Level Performance chart.

OTHER RAIL PRODUCTS:



ORDERING LOGIC

Example Part Number: RM4TZ-35K-R24-MB-W-501-T-1-DW-90

1	2	3	4	5	6	7	8	9	10	11	12
RM4TZ			MB				T				
1 SERIES RM4TZ Direct	2 COLOR TEMP 30K 3000K 35K 3500K 40K 4000K 90 CRI is available under OPTIONS	3 LENGTH 2 2 ft 8 8 ft 3 3 ft 9 9 ft 4 4 ft 10 10 ft 5 5 ft 11 11 ft 6 6 ft 12 12 ft 7 7 ft RA Continuous Rows (Replace "A" with length in feet) C Custom Length*	4 OPTICS MB Meta Blanc MB: Opal diffuse lens				5 NATATORIUM FINISH SA Satin Aluminum W White B Black C Custom Finish Specify RAL:			6 LIGHT LEVEL / DRIVER 35 350 lm/f 45 450 lm/f 60 600 lm/f 120 1200 lm/f C Custom Range Specify lumens: (Total lumens between 350-1200 at 50 lm intervals) Select Driver below. See Light Level Performance chart on p2.	
7 CIRCUITRY 1 1 Circuit EM Emergency / Night Light B Emergency Battery Pack ¹		8 MOUNTING T Recessed T-bar	9 VOLTAGE 1 120V 2 277V 3 347V 4 UNV(120-277V)		10 SENSORS Please see last page for fixture integrated SENSORS and CONTROLS Order Logic codes		11 CONTROLS		12 OPTIONS 90 90 CRI, High R9 _ None (leave space empty)		

*Consult factory. | ¹ Battery operates 4ft sections only.

Select Driver:

- Factory option 0-10V, 1% Dimming
- LHE** Lutron H-Series Hi-lume 1% EcoSystem LED Driver
- LSE** Lutron 5-Series EcoSystem LED Driver

Light Level Performance

3500K, 80 CRI, 0-10V Dimming (Standard)

Light Level	Meta Blanc (MB)		
	Lumens per foot	Wattage per foot	Efficacy (lm/W)
35	285	3.3	86.9
45	358	4.2	84.7
60	485	5.7	85.1
120	910	11.7	77.9

Lumen Adjustment Factor (Standard)

Color Temp	80 CRI	90 CRI
3000K	0.984	0.880
3500K	1.000	0.875
4000K	1.032	0.879

Metalumen's light level performance metrics are subject to manufacturers component tolerances.

CONTINUOUS ROWS

Step 1) Indicate desired quantity of rows under the QTY column

Step 2) ← Pods → If applicable, select pod(s) per row to indicate desired emergency lighting / night light / battery location. If a similar row requires a different Emergency lighting location, please fill out another sheet.

Record drawings for rows not represented here will be sent out upon order.

QTY	Nominal Length	Run Length Overall	Alone / Start Length	Mid Length(s)	End Length	ROWS IN PLAN VIEW
						Rows are for demonstration purposes only and are not to scale.
4'	For 4' T-bar Centers	4				1209 [47.6]
8'	For 8' T-bar Centers	8				2428 [95.6]
12'	For 12' T-bar Centers	12				3648 [143.6]
16'	For 16' T-bar Centers	8		8		4867 [191.6]
20'	For 20' T-bar Centers	12		8		6086 [238.9]
24'	For 24' T-bar Centers	12		12		7305 [287.6]
28'	For 28' T-bar Centers	8	12	8		8524 [335.6]
32'	For 32' T-bar Centers	12	8	12		9744 [383.6]
36'	For 36' T-bar Centers	12	12	12		10963 [431.6]
40'	For 40' T-bar Centers	12	8, 8	12		12182 [479.6]
44'	For 44' T-bar Centers	12	12, 8	12		13401 [527.6]
48'	For 48' T-bar Centers	12	12, 12	12		14620 [575.6]

LEGEND


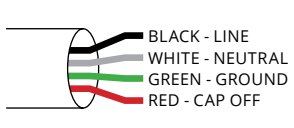
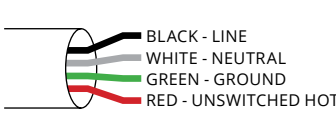
- Standard (STD) Wire Entry Location (located on the end cap)
- Emergency (EM) / Night Light Location (4 ft sections)
- EM or Battery Wire Entry Location (EM wire entry is on the end cap)

A A = Run Length (Body)

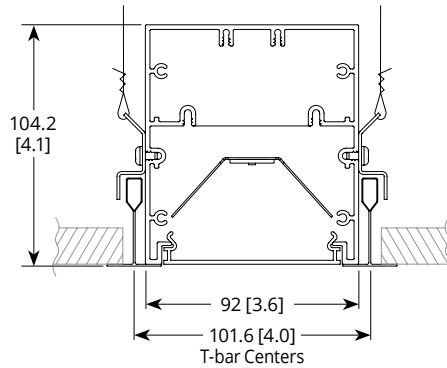
EM / Night Light and EM or Battery Wire Entry location in relation to pod selections:

Example 20 ft run

WIRING

Standard	Emergency / Night Light	Emergency Battery Pack
 <p>BLACK - LINE WHITE - NEUTRAL GREEN - GROUND RED - CAPPED/SW LEAD VIOLET - DIM(+) PINK - DIM(-)</p>	 <p>BLACK - LINE WHITE - NEUTRAL GREEN - GROUND RED - CAP OFF</p>	 <p>BLACK - LINE WHITE - NEUTRAL GREEN - GROUND RED - UNSWITCHED HOT</p>

CROSS SECTIONS



SPECIFICATIONS

Due to the Continuous Improvement Policy at Metalumen, we reserve the right to change our specifications without notice.

Housing: Rigid extruded aluminum body, 2.0mm (0.08”) nominal wall thickness. Aluminum end caps.
Optical System: Metalumen luminaires are designed to utilize leading edge LED technology combined with luminaire optimized reflectors and our custom diffusers, resulting in industry leading optical performance.
CRI: 83+ for 3500K, 80 minimum for all

CCTs in standard configurations.
Lumen Maintenance: Minimum 50,000h with TM-21 lumen maintenance of 85% @ 25°C ambient temperature (calculated based on IESNA LM-80-08 LED test data). L70: ≥60,000hrs.
Finish: Satin aluminum and white are standard finishes. For custom finish, contact factory.
Weight: 1.3 kg/300 mm [2.9 lb/ft]

Mounting: Mounting brackets/clips provided. Fits 15/16” TechZone T-Bar ceiling system.
Electrical: Factory prewired with easy wire quick connect sections.
Drivers: Metalumen offers 0-10V dimming* as a standard on our entire LED product offering. Dimming range is 1%-100%. Power factor is > 90%. Class 2 rating. Drivers are integral.
Approvals: All components are UL/

CSA/QPS recognized or listed. RoHS compliant. This product is cULus listed. Plenum - CCEA approved.
Environment: Suitable for dry or damp locations.

**Standard drivers compatible with passive/sinking dimmers. Please contact Metalumen if active/sourcing dimmer support is required.*

WARRANTY

Metalumen will warrant defective luminaires for 5 years from date of purchase. Warranty is valid if luminaire is installed and used according to specification. If defective, Metalumen will send replacement boards or drivers at no cost along with detailed replacement instructions and instructions on how to return defective components to Metalumen.

PHOTOMETRIC DATA - 3500K, 80 CRI

Optics: **Meta Blanc**
 IES File: **RM4TZ-35K-4-MB-60**
 Lumens: **485/ft** Wattage: **5.7/ft**
 Efficacy: **85.1 lm/W**

ZONAL LUMEN SUMMARY

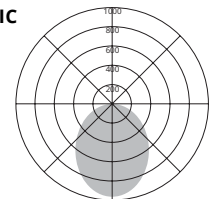
Zone	Lumens	%Fixt
0-90	1940	100
90-180	0	0
0-180	1940	100

LUMINANCE DATA (CD/M2)

Vertical Angle	Horizontal Angle	
	C0/180	C90/270
85	2399	4291
75	2955	4284
65	3581	5594
55	4439	6666
45	5606	7759

PHOTOMETRIC CURVE

100% Down



SENSORS AND CONTROLS



Metalumen offers intelligent standalone and/or connected luminaires with various integrated sensing and control system* connectivity options. The table below outlines some of the more common combinations and solutions offered. If you do not see the controls solution or the type of sensing technology you require for your project please contact us and we will work with you to try and identify a solution to meet your needs.

*Control system, installation and commissioning provided by others.

Examples:

WattStopper Daylight Sensor Standalone Luminaire: XXXX-35K-12-MB-W-L31-T-1-DW-90

Occupancy Sensor with Casambi Wireless Bluetooth Mesh Control Capability: XXXX-35K-12-MB-W-L31-T-1-O-CAB-90

ORDER LOGIC FIELDS		SENSOR FEATURE / BEHAVIOR		LUMINAIRE CONTROL / CONNECTIVITY	DESCRIPTION
11. SENSORS	12. CONTROLS	OCCUPANCY (PIR)	DAYLIGHT HARVESTING		
OF	-		None	Standalone	Factory Sensor - Occupancy Behaviors configured via BLE App
OW	-		None	Standalone (WattStopper)	Wattstopper Standalone Occupancy Sensor
DW	-	None		Standalone (WattStopper)	Wattstopper Standalone Daylight Harvesting Sensor
ODW	-			Standalone (WattStopper)	Wattstopper Standalone Occupancy and Daylight Harvesting Sensors
O	- CAB		None	Casambi Bluetooth Mesh	Casambi Bluetooth Mesh Connectivity with Occupancy Sensing
OD	- CAB			Casambi Bluetooth Mesh	Casambi Bluetooth Mesh Connectivity with Daylight Harvesting and Occupancy Sensing
	- CAB	None	None	Casambi Bluetooth Mesh	Casambi Bluetooth Mesh Connectivity (no sensors)
O	- SLVR		None	Silvair Bluetooth Mesh	Open Standard Bluetooth Mesh Connectivity with Occupancy Sensing
OD	- SLVR			Silvair Bluetooth Mesh	Open Standard Bluetooth Mesh Connectivity with Daylight Harvesting and Occupancy Sensing
	- SLVR	None	None	Silvair Bluetooth Mesh	Open Standard Bluetooth Mesh Connectivity (no sensors)
	- OSRM	None	None	Osram Enceium	Osram Enceium connectivity
OD	- OSRM			Osram Enceium	Osram SensiLum Connectivity for Enceium with Occupancy and Daylight Harvesting
OD	- ENL			Enlighted ONE	Occupancy and Daylight Harvesting Capable Supports EnlightedONE room control as well and upgrade path for Enlighted Connected and Enlighted IoT offering advanced applications, analytics and insights for Space Utilization/Optimization, Asset Tracking, Energy Monitoring, HVAC Integration etc..
	- DALI	None	None	DALI addressable wired Luminaire	Generic DALI addressable luminaire
	- ECOS	None	None	Lutron Ecosystem	Lutron Ecosystem addressable wired luminaire NOTE: See Driver Selection options for specific driver

